

Operator's Manual



cablabel S3

| Family | Art. Nr | Type |
|--------------------------------|---------|-----------------------|
| Labelling Software cablabel S3 | 5588000 | cablabel S3 Lite |
| | 5588009 | cablabel S3 Demo |
| | 5588001 | cablabel S3 Pro |
| | 5588010 | cablabel S3 Pro Laser |

Edition: 07/2015 - **Part. No.:** 9009606

Copyright

This documentation as well as translation hereof are property of cab Produkttechnik GmbH & Co. KG.

The replication, conversion, duplication or divulgement of the whole manual or parts of it for other intentions than its original intended purpose demand the previous written authorization by cab.

Trademark

Microsoft® is a registered trademark of the Microsoft Corporation.

Windows® is a registered trademark of the Microsoft Corporation.

TrueType™ is a registered trademark of the Apple Computer, Inc.

Editor

Regarding questions or comments please contact cab Produkttechnik GmbH & Co. KG.

Topicality

Due to the constant further development of our products discrepancies between documentation and product can occur.

Please check www.cab.de for the latest update.

Terms and conditions

Deliveries and performances are effected under the General conditions of sale of cab.

Germany

cab Produkttechnik
GmbH & Co KG
Wilhelm-Schickard-Str. 14
76131 Karlsruhe
Tel. +49 721 6626 0
Fax+49 721 6626 129
info@cab.de
www.cab.de

cab Produkttechnik
Sömmerda GmbH
Am Unterwege 18-20
99610 Sömmerda
Tel. +49 3634 6860 0
Fax+49 3634 6860 129
info@cab.de
www.cab.de

France

cab Technologies s.à.r.l.
2a rue de la Moder
Z.A. Nord du Val de Moder
67350 Niedermodern
Tel. +33 388 722501
Fax+33 388 722502
info@cab-technologies.fr
www.cab-technologies.fr

USA

cab Technology, Inc.
87 Progress Avenue Unit 1
Tyngsboro, MA 01879
Tel. +1 978 649 0293
Fax+1 978 649 0294
info.us@cab.de
www.cab.de/us

Latin America

Alejandro Balmaceda
Hacienda Jurica Pte 1615
Colonial de Valle
32553 Ciudad Juárez
Tel. +52 656 682 3745
Fax+52 656 682 4301
a.balmaceda@cab.de
www.cab.de/es

South Africa

cab Technology (Pty) Ltd.
14 Republic Street
Bordeaux
2125 Randburg
Tel. +27 11 886 3580
Fax+27 11 789 3913
info.za@cab.de
www.cab.de/za

Taiwan

cab Technology Co., Ltd.
希愛比科技股份有限公司
16F-1, No. 700, Jhong Jheng Rd
Junghe, Taipeh 23552
Tel. +886 (02) 8227 3966
Fax+886 (02) 8227 3566
info.asia@cab.de
www.cab.de/tw

China

cab (Shanghai) Trading Co., Ltd
锐博(上海)贸易有限公司
A507, No. 268, Tong Xie Rd
Shanghai 200335
Tel. +86 (021) 6236 3161
Fax+86 (021) 6236 3162
info.cn@cab.de
www.cab.de/cn

Representatives in other countries on request.

| | | |
|----------|--|-----------|
| 1 | Introduction | 5 |
| 1.1 | Instructions | 5 |
| 1.2 | System requirements | 5 |
| 1.3 | cablabel S3 specifications | 6 |
| 2 | Installation | 7 |
| 2.1 | Installing on computer | 7 |
| 2.2 | Program starting | 9 |
| 2.3 | Activation | 10 |
| 2.3.1 | Online activation | 11 |
| 2.3.2 | File activation | 11 |
| 3 | Overview | 12 |
| 3.1 | Main interface | 12 |
| 3.2 | Designer | 13 |
| 3.2.1 | Drawing toolbar | 14 |
| 3.2.2 | Special toolbar | 14 |
| 3.2.3 | Edit toolbar | 14 |
| 3.2.4 | Font toolbar | 15 |
| 3.2.5 | Pen / brush toolbar | 15 |
| 3.2.6 | Arrange toolbar | 16 |
| 3.2.7 | Database toolbar | 17 |
| 3.2.8 | View toolbar | 17 |
| 3.2.9 | Layers | 18 |
| 3.2.10 | Status bar | 19 |
| 4 | Configuration | 20 |
| 4.1 | Global settings | 20 |
| 4.1.1 | General tab | 20 |
| 4.1.2 | Grid tab | 21 |
| 4.1.3 | Object tab | 21 |
| 4.1.4 | Background tab | 22 |
| 4.1.5 | Brush & pen tab | 22 |
| 4.2 | Devices | 24 |
| 4.2.1 | Add a device | 24 |
| 4.2.2 | Delete a device | 25 |
| 4.2.3 | Rename a device | 25 |
| 4.2.4 | Configure a device | 25 |
| 4.2.5 | Device options | 26 |
| 4.2.6 | System devices / Document devices | 26 |
| 5 | Use | 27 |
| 5.1 | New label creation | 27 |
| 5.1.1 | New blank label | 27 |
| 5.1.2 | New label using the wizard | 28 |
| 5.1.3 | New label from an existing label | 28 |
| 5.2 | Inserting objects in the document | 28 |
| 5.2.1 | Inserting texts | 29 |
| 5.2.2 | Inserting pictures | 32 |
| 5.2.3 | inserting graphical objects | 33 |
| 5.2.4 | Inserting barcodes | 33 |
| 5.2.5 | Inserting variable data | 34 |
| 5.3 | Document settings | 41 |
| 5.4 | Label printing | 42 |
| 5.4.1 | Printing on a two color printer | 44 |
| 5.4.2 | Printing on a double sided printer | 44 |
| 5.5 | Save a label on a memory card | 45 |
| 5.5.1 | Saving to a printer, a file or a card reader | 45 |
| 5.5.2 | Saving in a database | 46 |
| 5.6 | Keyboard shortcuts | 47 |

| | | |
|----------|---|-----------|
| 6 | Plug-ins | 49 |
| 6.1 | Printer spooler | 50 |
| 6.1.1 | Managing print jobs and printer functions..... | 50 |
| 6.1.2 | Printer status | 51 |
| 6.1.3 | Memory card management | 51 |
| 6.1.4 | Printer display | 52 |
| 6.2 | JScript code viewer | 53 |
| 6.3 | Barcode wizards..... | 54 |
| 6.3.1 | UCC/EAN/GS1-128 and GS1 Datamatrix wizard | 54 |
| 6.3.2 | FACT wizard | 55 |
| 6.3.3 | QR wizard..... | 56 |
| 6.4 | Database wizard | 57 |
| 6.5 | Keywords | 59 |
| 6.6 | Layout table management..... | 61 |
| 7 | Appendix..... | 62 |
| 7.1 | Installation parameters..... | 62 |
| 7.2 | Start parameters | 64 |

1.1 Instructions

Important information and instructions in this documentation are designated as follows:

**Danger!**

Draws your attention to an exceptionally grave, impending danger to your health or life.

**Warning!**

Indicates a hazardous situation that could lead to injuries or material damage.

**Attention!**

Draws attention to possible dangers, material damage or loss of quality.

**Notice!**

Gives you tips. They make a working sequence easier or draw attention to important working processes.

**Environment!**

Gives you tips on protecting the environment.



Handling instruction.



Reference to section, position, illustration number or document.



Option (accessories, devices, special fittings).



Information in the display.

1.2 System requirements

- PC with 2 GHz Processor or higher
- 32/64 bit Microsoft® Windows® operating system with latest updates:

| | |
|---------------|----------------|
| Windows XP | Server 2003 |
| Windows Vista | Server 2008 |
| Windows 7 | Server 2008 R2 |
| Windows 8 | Server 2012 |
| Windows 8.1 | Server 2012 R2 |
| Windows 10 | |
- 1 GB available RAM (depending on the system)
- 500 MB available hard disk space
- Administrator rights on local computer for installation and activation

1.3 cablabel S3 specifications

| | Lite | Pro | Print | Print Server* |
|--|------------------|------------------|------------------|------------------|
| General functions | | | | |
| Languages: English, French, German, Spanish, Italian, Chinese (simplified), Korean | ■ | ■ | ■ | ■ |
| Creating labels | ■ | ■ | | |
| Printing labels | ■ | ■ | ■ | ■ |
| JScript code viewer | | ■ | | |
| Unicode support | ■ | ■ | ■ | ■ |
| cab labels formats | ■ | ■ | | |
| Graphic import Raster (bmp, jpg, tif...) | ■ | ■ | | |
| Vector (plt, dxf) | | ■ | | |
| Color support | ■ | ■ | ■ | ■ |
| Layers management | ■ | ■ | | |
| TrueType fonts | ■ | ■ | ■ | ■ |
| Linear and 2D barcodes | ■ ⁽¹⁾ | ■ | ■ | ■ |
| True WYSIWYG | ■ | ■ | ■ | ■ |
| Wizard-based user interface | ■ | ■ | | |
| Laser devices support | | ■ ⁽²⁾ | ■ ⁽²⁾ | |
| GS1 barcode wizard (UCC/EAN 128) | | ■ | | |
| Text alignment | ■ | ■ | | |
| Background image or color | ■ | ■ | ■ | ■ |
| Prompt fields free | ■ | ■ | ■ | ■ |
| with display mask | | ■ | ■ | ■ |
| ABC basic compiler support | | ■ | | |
| ABC code library | | ■ | | |
| Date and time including offsets | | ■ | ■ | |
| Counter basic | ■ | ■ | ■ | |
| advanced | | ■ | ■ | |
| Variable graphics | | ■ | | |
| Decimals formatting | | ■ | | |
| Multiline, paragraph | ■ | ■ | ■ | ■ |
| Text box with various markups (e.g. for highlighting allergens) | | ■ | ■ | ■ |
| View and control of the printer display | ■ ⁽³⁾ | ■ ⁽³⁾ | ■ ⁽³⁾ | ■ ⁽³⁾ |
| Database functions | | | | |
| OleDb, ODBC, ASCII | | ■ | ■ ⁽⁴⁾ | ■ ⁽⁴⁾ |
| Database Connector | | ■ | | |
| Query editor | | ■ | | |
| Multiple tables and databases | | ■ | ■ ⁽⁴⁾ | ■ ⁽⁴⁾ |
| Import/export functions | | | | |
| Print to file | ■ | ■ | | |
| Export to graphic | | ■ | | |
| Export to PDF | | ■ | | |
| Import of JScript files | | ■ | | |
| Printing functions | | | | |
| Interfaces: serial, parallel, USB, Ethernet, WLAN | ■ | ■ | ■ | ■ |
| Number of native cab printers | unlimited | unlimited | unlimited | ⁽⁵⁾ |
| Printer spooler | ■ | ■ | ■ | ■ |
| Bidirectional communication | ■ | ■ | ■ | ■ |
| Standalone mode | ■ ⁽⁶⁾ | ■ ⁽⁶⁾ | ■ ⁽⁶⁾ | ■ ⁽⁶⁾ |
| Network printer (TCP/IP) | ■ | ■ | ■ | ■ |
| Windows printer | | ■ | ■ | ■ |

Table 1 Specifications

* In progress

⁽¹⁾ Except barcodes with assistant⁽²⁾ Specific version⁽³⁾ Depending on printer model and used port⁽⁴⁾ Run queries only⁽⁵⁾ Depending on licence⁽⁶⁾ Except E4, Gemini, LX

2.1 Installing on computer

Information !



It is possible to do a silent installation of cablabel S3 directly in command line.

▷ 7.1 Installation parameters.

- ▶ Insert the delivered CD-Rom in your computer, the installation should start automatically.
If the autorun does not start or if you have downloaded the installation file, double-click on the file « cablabelS3_XXXX_Setup.exe » to begin the installation (where XXXX matches your version).
- ▶ Select the installation language of the program.

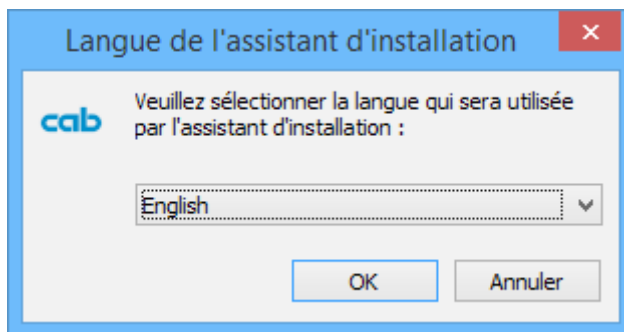


Figure 1 Select installation language

- ▶ Start installation and read the user license.



Figure 2 Start of installation program

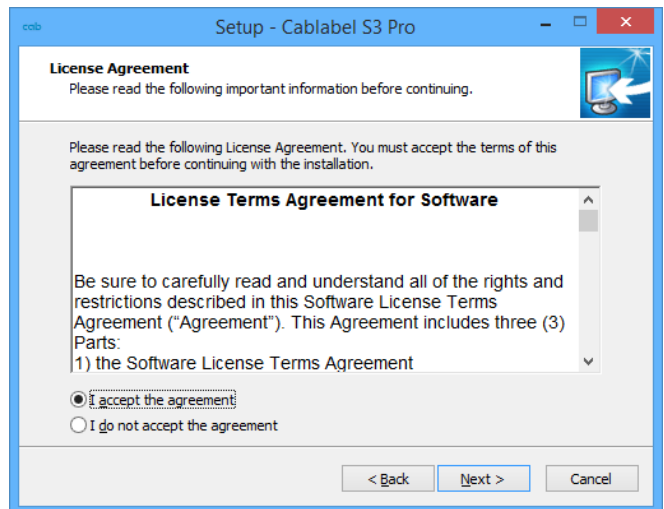


Figure 3 License agreement

- Enter user information.

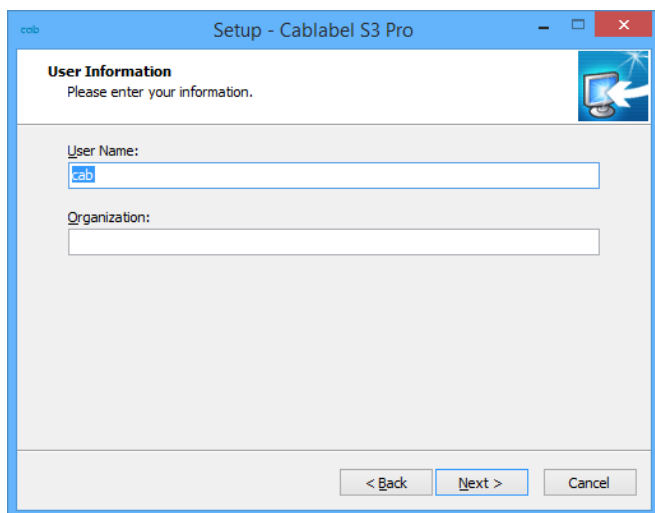


Figure 4 User information

- The program will be installed by default in the displayed folder, you can change it if required.

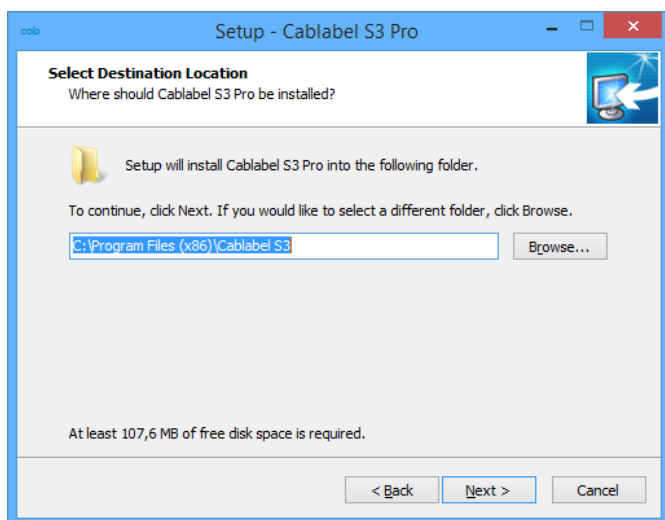


Figure 5 Choose of target folder

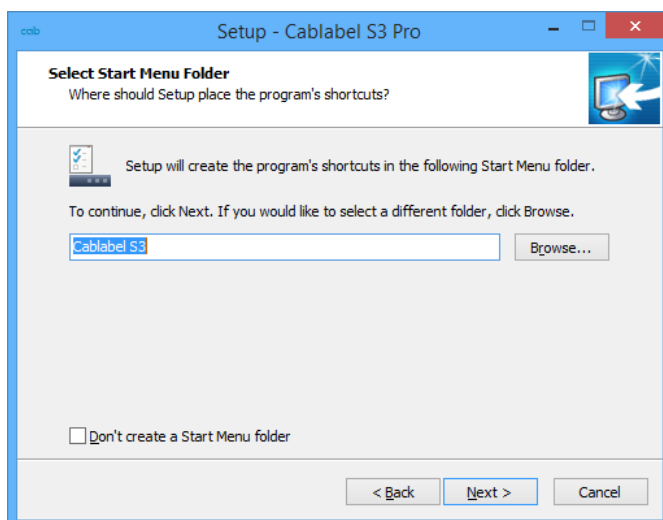


Figure 6 Choose of start menu folder

- Select the additional tasks to be done by the installation program and check the selected options summary.
- Click on **Install**.

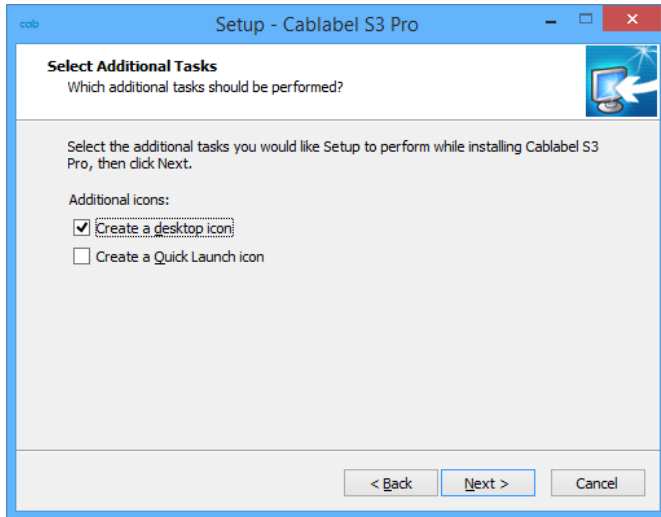


Figure 7 Additional tasks

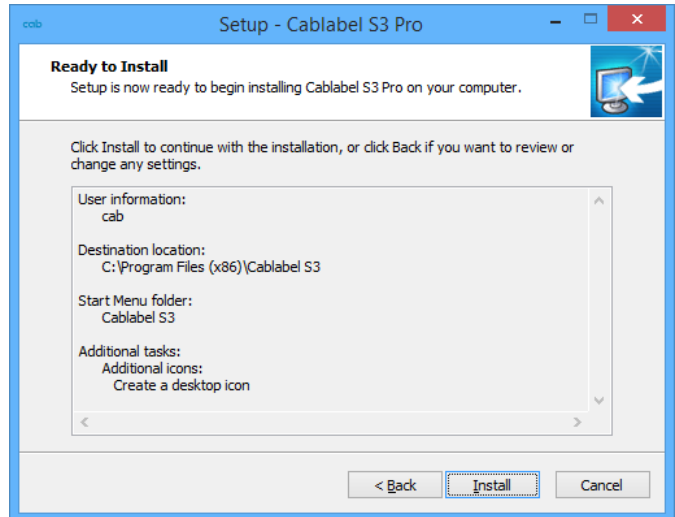


Figure 8 Installation summary

- Wait until the end of the installation.

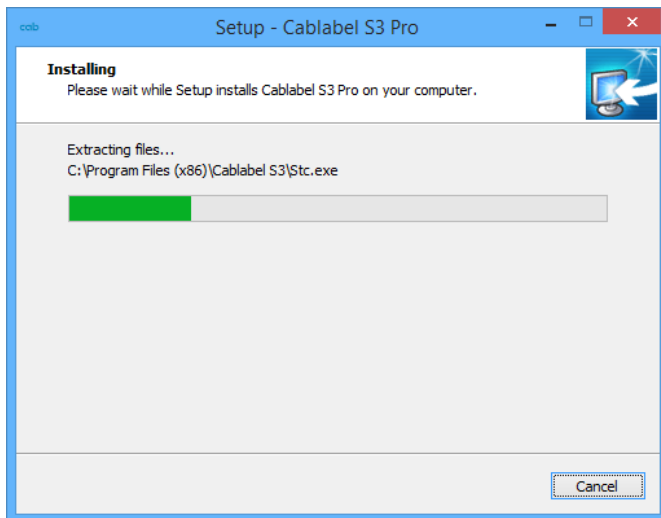


Figure 9 Installation progress

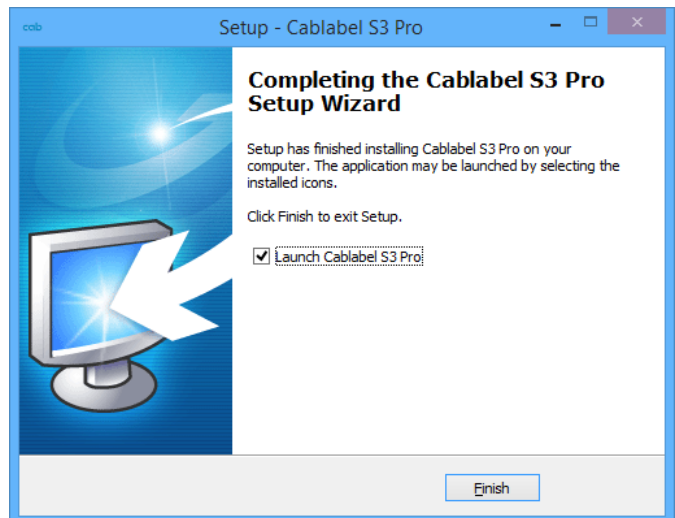


Figure 10 End of installation

2.2 Program starting

After installing cablabel S3, an icon of the program is placed on the user desktop and/or in the start menu (depending on selected installation options).

- Start the program by double clicking on one of these icons.

2.3 Activation

Depending on the installed version, an activation is needed before you can use the program.

Attention!

Except the Lite version, the program cannot be used without being activated.

At the first start, a message will ask you to activate the program.

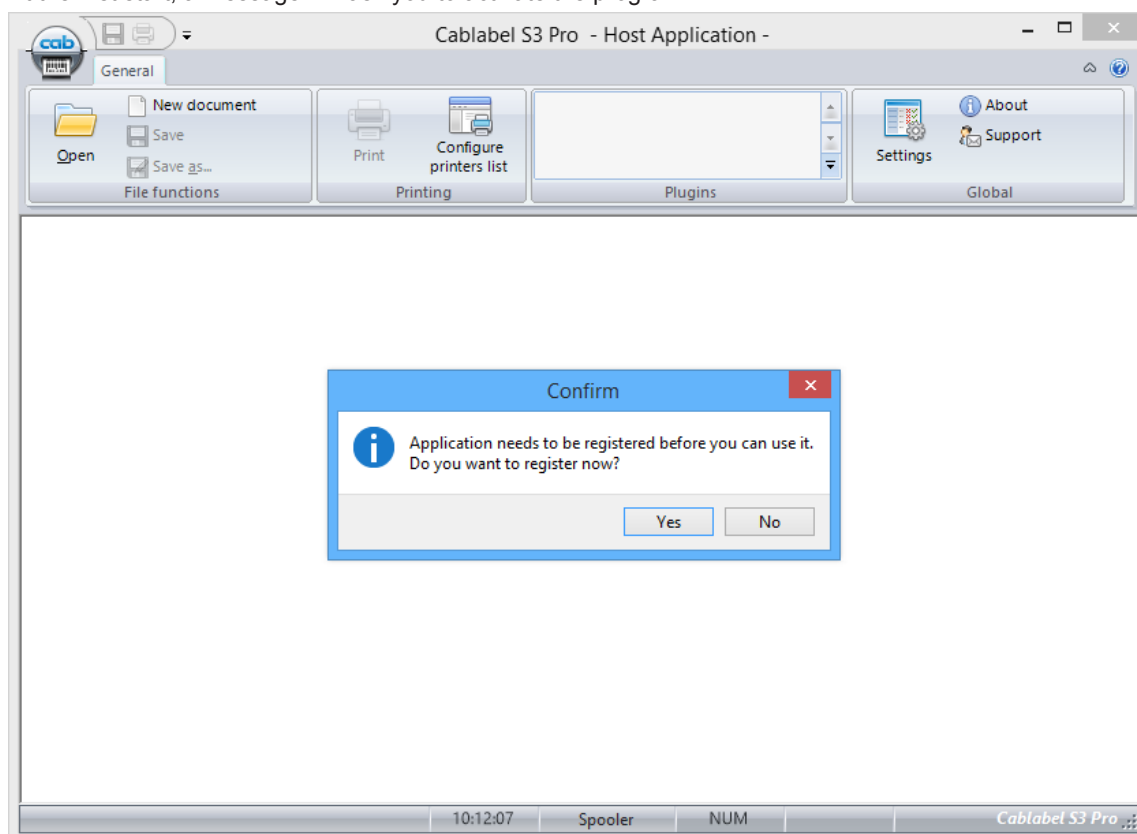


Figure 11 Program activation

After clicking on **yes**, the activation wizard starts.



Figure 12 Activation wizard

2.3.1 Online activation

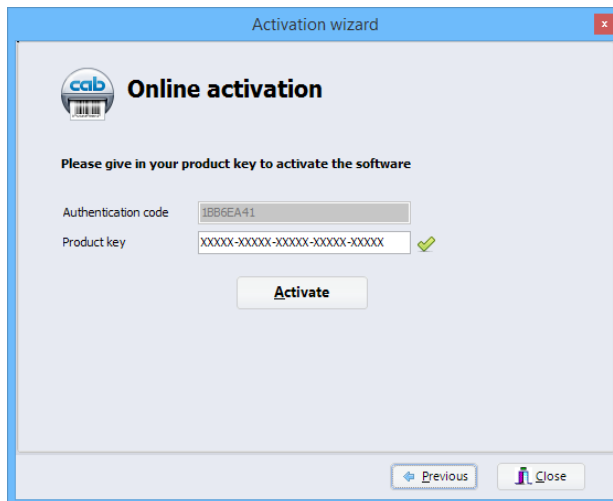


Figure 13 Online activation

- ▶ Enter product key provided with your purchase.
- ▶ Click on the `Activate` button.
The software will be automatically activated after some seconds.



Notice!

An internet access is required for online activation.
Otherwise you will have to use the file activation.

2.3.2 File activation

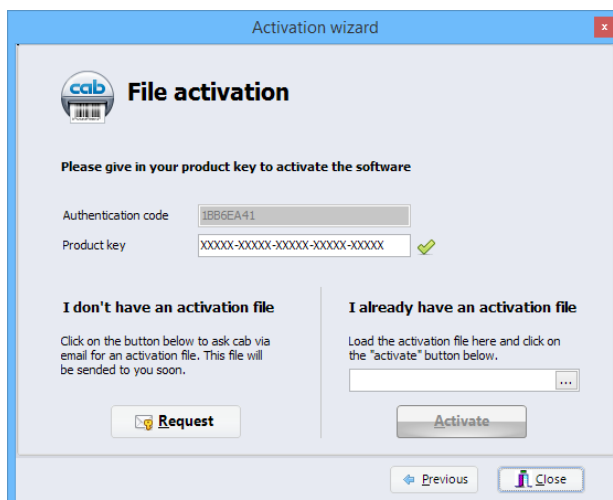


Figure 14 File activation

If you don't have an internet access or if online activation did not work, it is possible to use this alternate method.

An activation request will be sent after a few steps.

In this case, after entering your product key by clicking on the `Request` button an email will be prepared for sending to our activation service. The activation file will be returned to you by email once generated.

This file must be transferred to the computer where cablabel S3 is installed.

- ▶ Select the received activation file with the suited button.
- ▶ Click on the `Activate` button.
- ▶ After activation, the software will restart automatically.

3.1 Main interface

After activation and restarting, the welcome page appears:

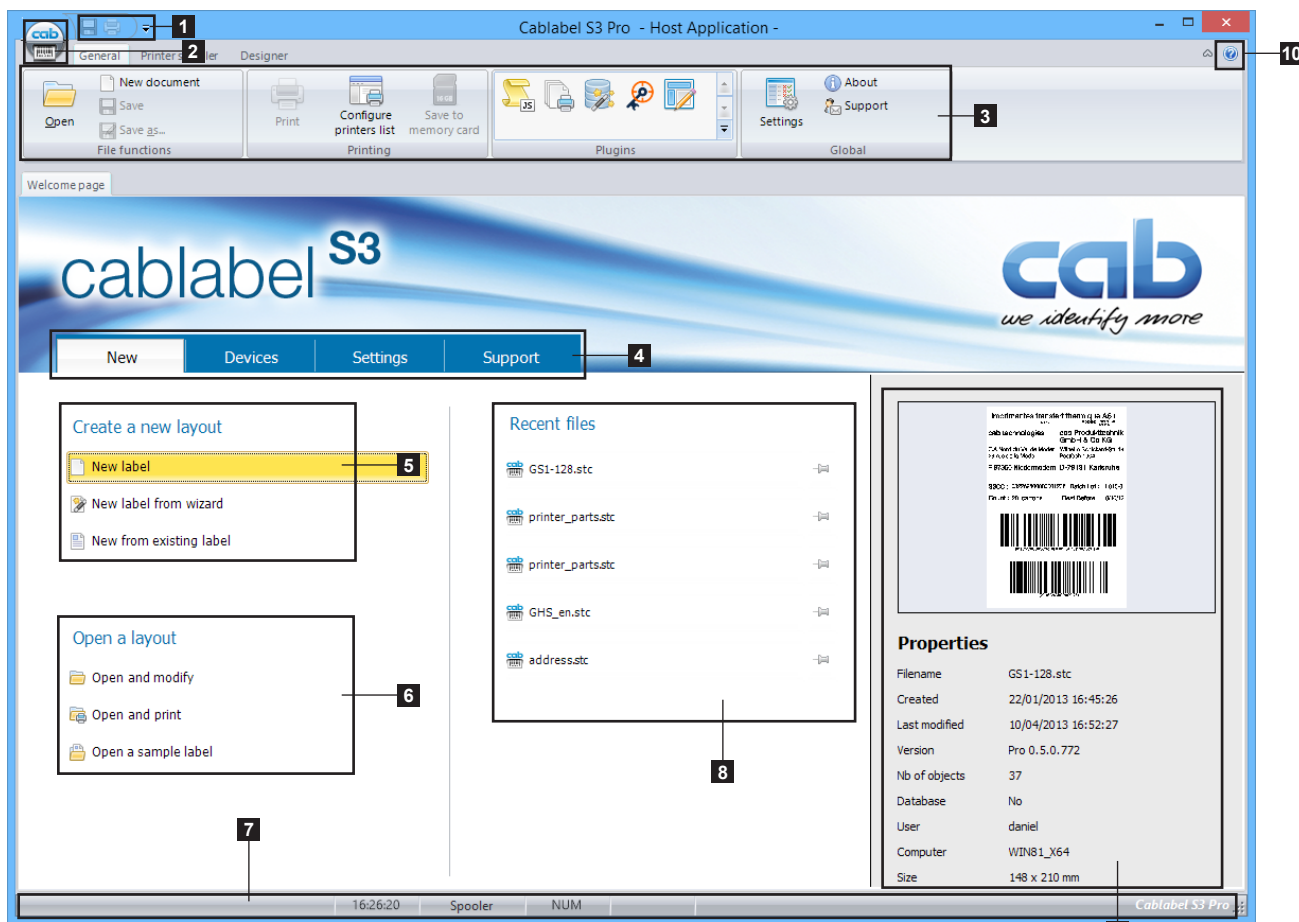


Figure 15 cablabel S3 welcome page

| | |
|----------------------|--|
| 1. Quick access bar | Quick access to the most common commands (open, save ...) |
| 2. Main button | Access to main software commands |
| 3. Toolbar | Access to different objects and properties of selected ribbon |
| 4. Welcome page | Starting page |
| 5. New label | Create a new label |
| 6. Open label | Open an existing label |
| 7. Status bar | Status and informations |
| 8. Recent files | List of last opened labels, with favorites pinning possibility |
| 9. File informations | Preview and informations of the selected label |
| 10. Help button | Access to the operator's manual |

3.2 Designer

The designer let you create a label and place different objects on it.

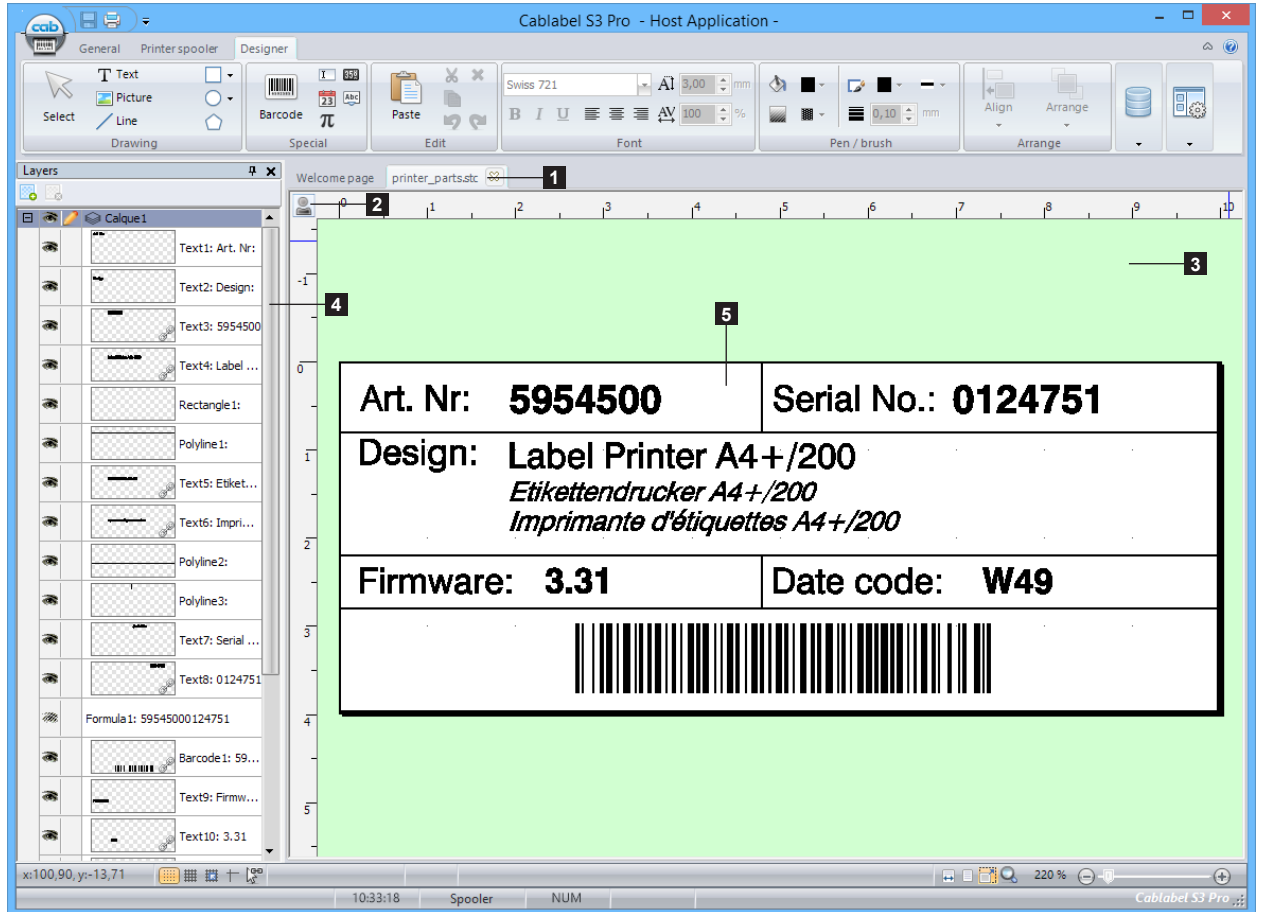


Figure 16 Designer

| | |
|-----------------------|--|
| 1. Opened labels | Tab with the opened labels |
| 2. Layout orientation | Portrait/Landscape (orientation without objects by holding "Ctrl" key) |
| 3. Background | Label background |
| 4. Layers | Layers with the different objects |
| 5. Label | Label with the different objects |

3.2.1 Drawing toolbar

The **Drawing** toolbar is composed of the most used objects on a label.

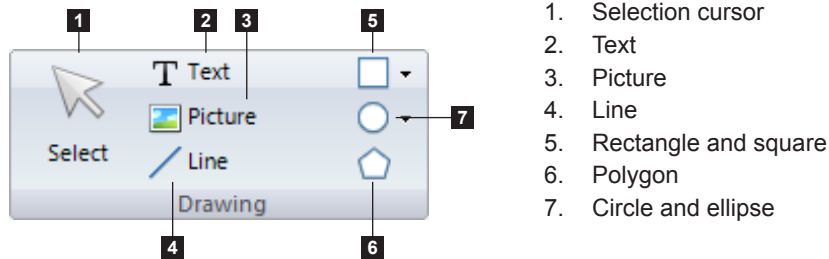


Figure 17 Drawing toolbar

Notice!



"Ctrl" key allows to draw the objects with a free angle, instead of an horizontal or vertical alignment.
 "Alt" key allows to draw the objects starting from the center, instead of the top left corner.

3.2.2 Special toolbar

The **Special** toolbar is composed of special objects to insert variable data.

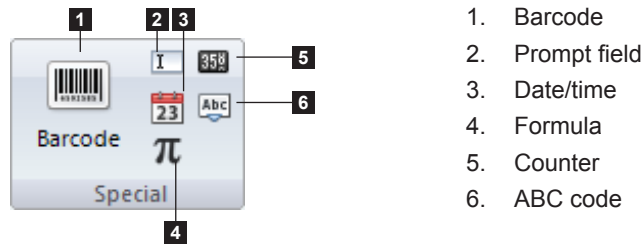


Figure 18 Special toolbar

3.2.3 Edit toolbar

The **Edit** toolbar is composed of basic edition commands.

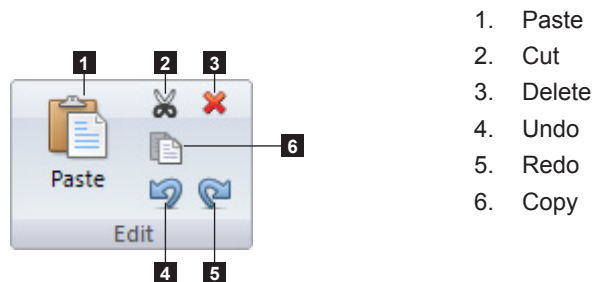
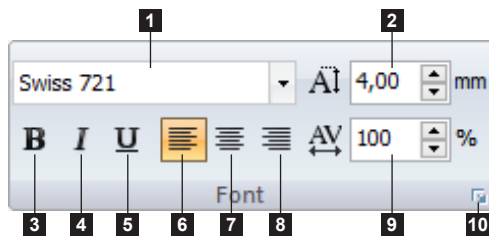


Figure 19 Edit toolbar

3.2.4 Font toolbar

The **Font** toolbar is composed of different text formatting commands.

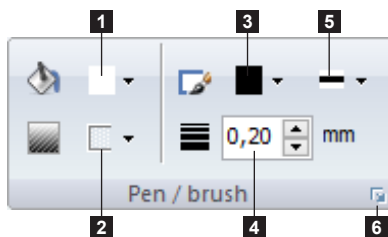


1. Font face
2. Font height (size) in mm
3. Bold
4. Italic
5. Underline
6. Left alignment
7. Center alignment
8. Right alignment
9. Font width
10. Advanced properties

Figure 20 Font toolbar

3.2.5 Pen / brush toolbar

The **Pen / brush** toolbar is composed of the different commands to change the outline and filling of a drawing object.



1. Filling color
2. Filling style
3. Outline color
4. Pen size
5. Outline style
6. Advanced properties

Figure 21 Pen / brush toolbar

3.2.6 Arrange toolbar

The **Arrange** toolbar is composed of different commands to adjust the objects position.

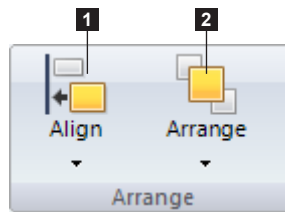


Figure 22 Arrange toolbar

1. Alignment of selected objects
2. Arrangement of selected objects

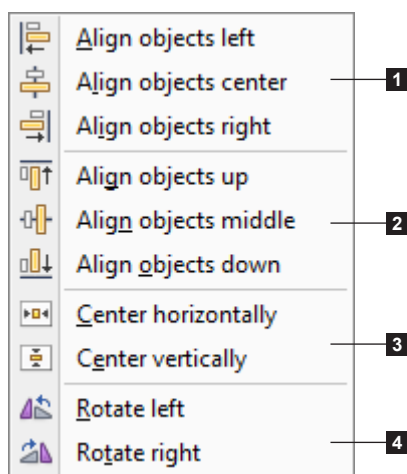


Figure 23 Alignment options

1. Horizontal alignment of selected objects
2. Vertical alignment of selected objects
3. Centering of selected objects in the label
4. Rotation of selected objects

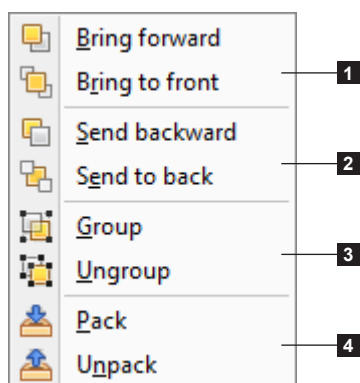
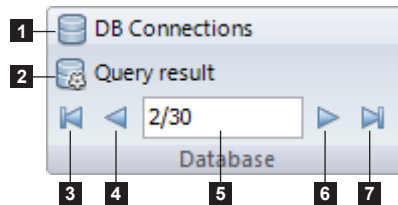


Figure 24 Arrange options

1. Objects stack up position in the label (front)
2. Objects stack up position in the label (back)
3. Group / ungroup selected objects
Selected objects are only displayed as grouped, but sent individually to the printer.
4. Pack / unpack selected objects
Selected objects are merged and sent to the printer as one picture.

3.2.7 Database toolbar

The **Database** toolbar is composed of the different commands to connect and use a database.



1. Create / change database connection
2. Display the result of the query
3. First record
4. Previous record
5. Actual record position
6. Next record
7. Last record

Figure 25 Database toolbar

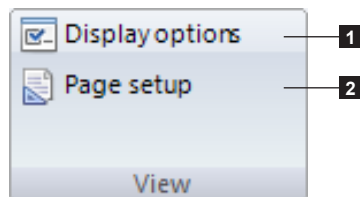
Notice!



The database toolbar appears only when the database plug-in is loaded. ▷ 6.4 Database wizard
This plug-in is not available in every versions of cablabel S3.

3.2.8 View toolbar

The **View** toolbar is composed of the different visual commands.



1. Display view settings
2. Label and paper properties

Figure 26 View toolbar

Notice!



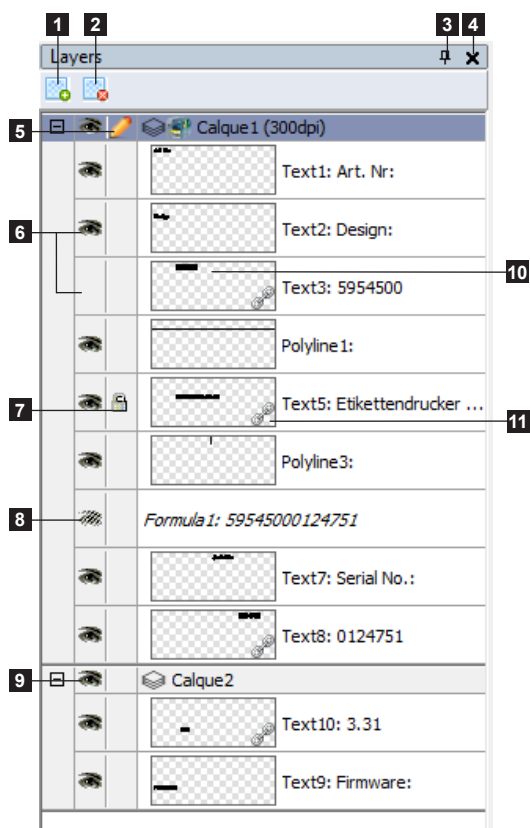
It is possible to set a picture to the label background in the display options.
If you use pre-printed labels, this background picture can for example display your pre-printed label.
So you have a real view of your resulting label when placing objects on it.

3.2.9 Layers

Layers contain all different objects composing a label.

Each layer can be hide or locked. Each object on the layer can also be individually hide or locked in order to prevent moving.

A layer can also be assigned to a pre-defined printing resolution. For example one layer for a 300 dpi resolution.



1. Add a new layer
2. Delete selected layer
3. Pin layers window
4. Close layers window
5. Edit / lock layer
6. Object visible / invisible on display and printing
7. Object lock
8. Object invisible only on printing
9. Layer visibility
10. Object preview on label
11. Object linked to another (for example linked to a variable)

Figure 27 Layers

Notice!



Layer objects assigned to a specific resolution, will only be printed on devices supporting the same resolution. For example objects from a 200 dpi layer, will not be printed on a 300 or 600 dpi device. This can be useful to display the real size of a barcode.

Different options are available by right-clicking on the layers:

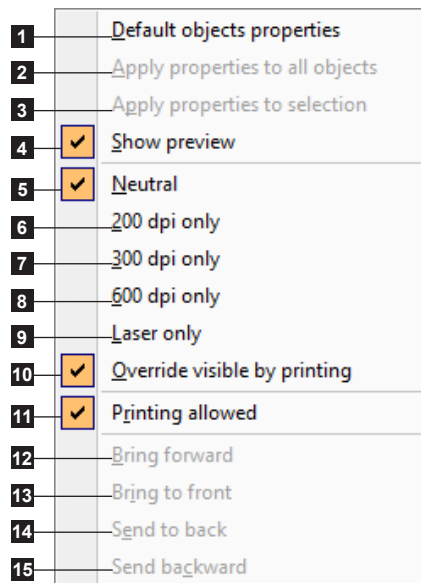


Figure 28 Layers properties

1. Display the default objects properties window
2. Apply the properties to all objects of the selected layer
3. Apply the properties to the selected object
4. Show a preview of the object in the label
5. Neutral layer device-independent
6. Layer forced for 200 dpi devices
7. Layer forced for 300 dpi devices
8. Layer forced for 600 dpi devices
9. Layer forced for laser devices
10. Force printing layer for the corresponding print resolution
11. If printing is not allowed, the objects in the layer are visible on the screen but are not sent to the device

Only if there are several layers in the document:

12. Bring the selected layers forward
13. Bring the selected layers to front
14. Send the selected layers to back
15. Send the selected layers backward

3.2.10 Status bar

The status bar display different states and information of the active label.

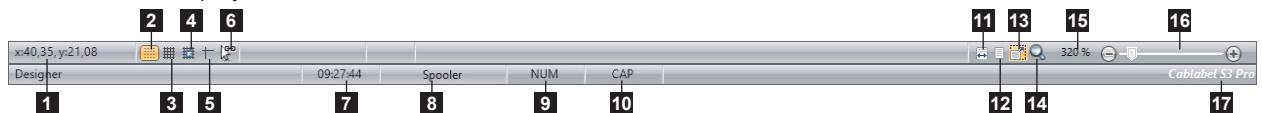


Figure 29 Status bar

- | |
|---|
| 1. Cursor coordinates (in mm) on label |
| 2. Show / hide dot grid |
| 3. Show / hide line grid |
| 4. Activate / deactivate snap to grid |
| 5. Show / hide cursor guide |
| 6. Activate / deactivate last object repetition |
| 7. Current time |
| 8. Switch to printer spooler |
| 9. Num Lock status |
| 10. Caps Lock status |
| 11. View adjust to the page width |
| 12. View adjust to the whole page |
| 13. Activate / deactivate automatic resizing of the page when the window is resized |
| 14. Zoom on selection |
| 15. Zoom level |
| 16. Zoom level slider |
| 17. cablabel S3 version |

4.1 Global settings

cablabel S3 settings are available under the **Settings** button in the **General** ribbon. You can for example change the software language or style (color theme).

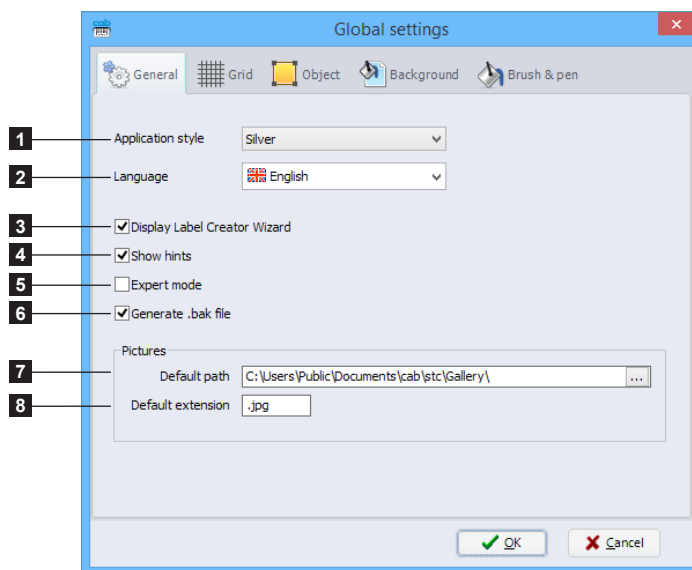


Warning!

These settings are the default settings which will be applied when creating a new label.

4.1.1 General tab

In this tab you will find the parameters related to the program.



1. Application style (color theme)
2. Application language
3. Show / hide the Label Creator Wizard
4. Show / hide the display of tooltips on objects
5. Enable / disable the expert mode
6. Enable / disable the creation of a backup file
7. Default search folder where pictures are stored
8. Default extension for picture files

Figure 30 General global settings

• Expert mode

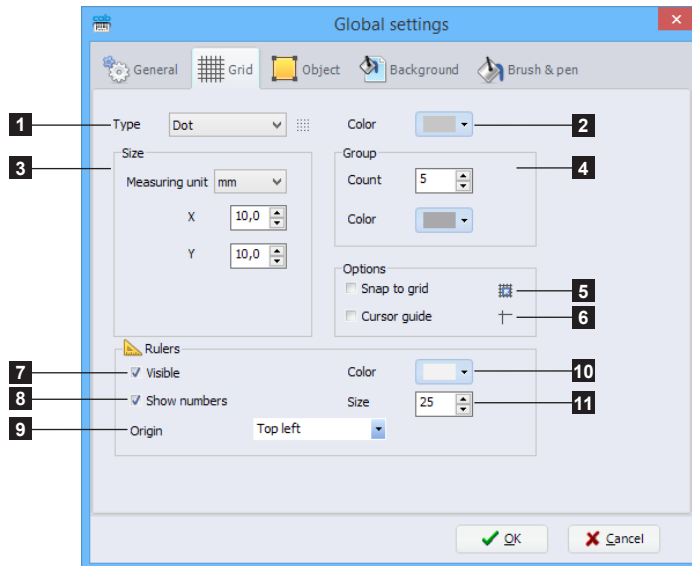
The expert mode allows access to some features reserved for advanced users.

It allows:

- to print documents without correction even if the parameters are outside the device specifications ▷ page 42
- in standalone mode, to disable the automatic font downloading of fixed texts
- to display the **System devices** tab when configuring a device if a document is opened
- to access the color management for each object

4.1.2 Grid tab

In this tab you will find the display-related settings.

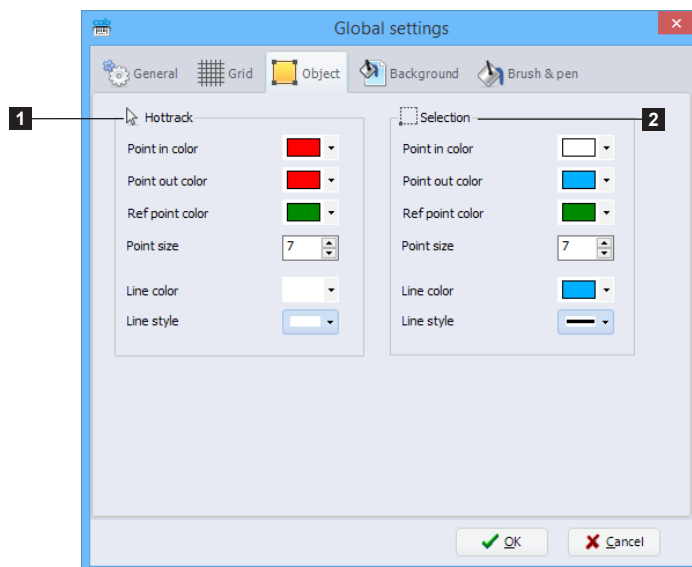


1. Grid type (none, dots or lines)
2. Grid color
3. Grid size
4. Group settings
5. Enable / disable automatic alignment of objects on the grid
6. Show / hide the cursor guide
7. Show / hide the rulers
8. Show / hide numbers on rulers
9. Origin position of the rulers
10. Rulers color
11. Rulers size

Figure 31 Global grid settings

4.1.3 Object tab

In this tab you will find the parameters related to objects.

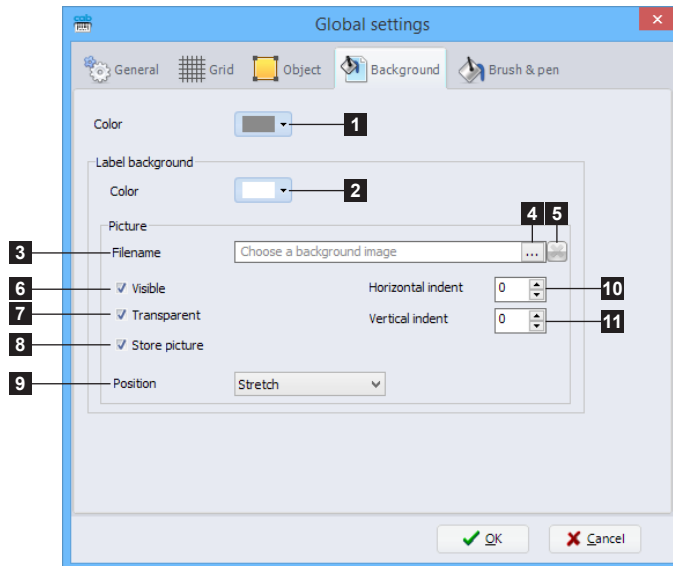


1. Settings on mouse over an object on the label
2. Settings when selecting an object on the label

Figure 32 Global objects settings

4.1.4 Background tab

In this tab you will find the settings related to the background.

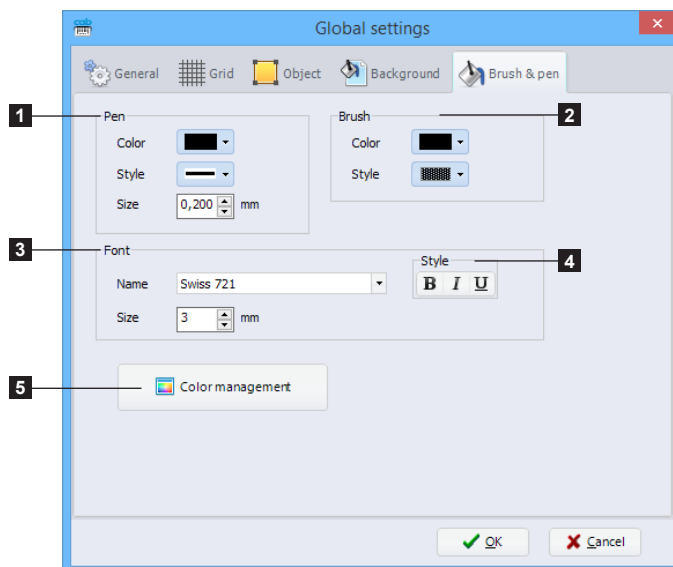


1. Background color
2. Label background color
3. Path of the label background picture file
4. Browse your computer to select a picture file
5. Delete the label background picture
6. Show / hide the label background picture
7. Enable / disable the transparency of the label background picture (if this picture supports transparency)
8. Enable / disable saving the picture in the label file
9. Specify the picture position
10. Picture offset in horizontal direction
11. Picture offset in vertical direction

Figure 33 Global background settings

4.1.5 Brush & pen tab

In this tab you will find the parameters related to the brush and pen of objects as well as text fonts.



1. Objects pen settings
2. Objects brush settings
3. Font type and size
4. Font style
5. Color management for color printers ▷page 23

Figure 34 Global brush and pen settings

- Color management

**Notice!**

Picture split color settings are only used when printing on a two color printer.

When printing on a two color printer (XC ...), you can specify the secondary color to print.

For this you can select a color from the list or pick it directly on the screen or in your label using the eyedropper tool. The objects defined with this color will then automatically send to the first printhead.

Different settings to adjust the tolerance of this color are also available

The gamma correction allows you to change the rendering of the lightest colors.

Colors auto levels is redefining the color scale by applying the lightest pixel to the white color and the darkest one to the black color.

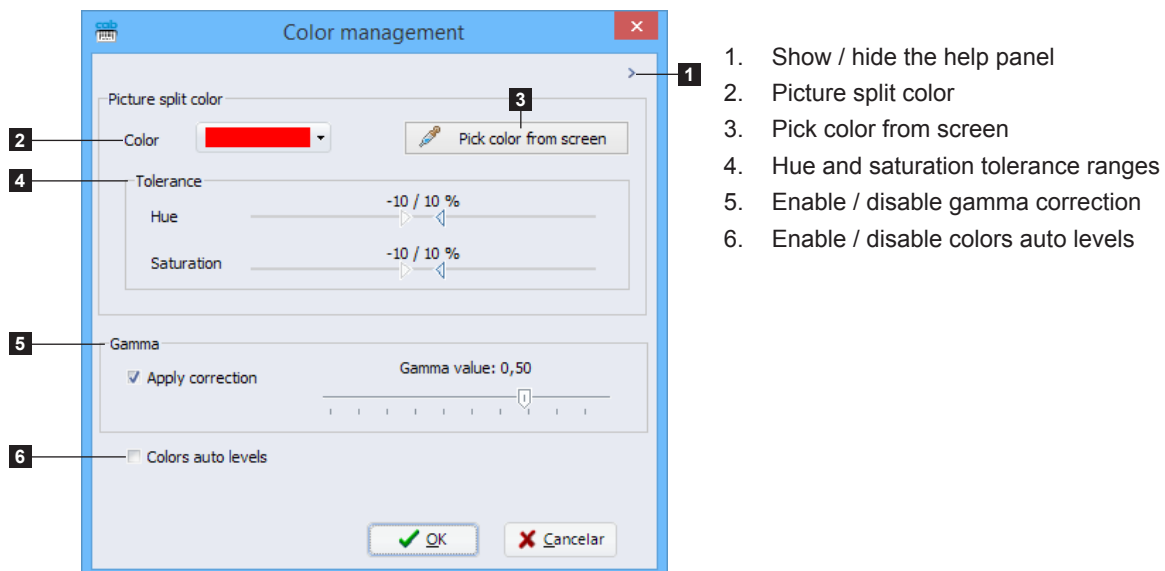


Figure 35 Color management

4.2 Devices

All cab devices drivers are build-in in cablabel S3.

Devices are installed in the main application and their print settings will be saved in the document after the first printing.




Attention!

Unlike other labelling software, in cablabel S3 the label is created regardless of the device or resolution. The label can then be printed on any device.

So, there is no default or active device.

4.2.1 Add a device

To add a new device click on the `Configure printers list` button  in the general ribbon or click on the `Printers` tab on the welcome page.

- Select the device type (1) and device model (2) to install from the right list.
- Double-click on selected model (2) or click on `Install selected device` button (3) to install it. It will be added on the left in the installed devices (4).
- Validate with the `OK` button (5).

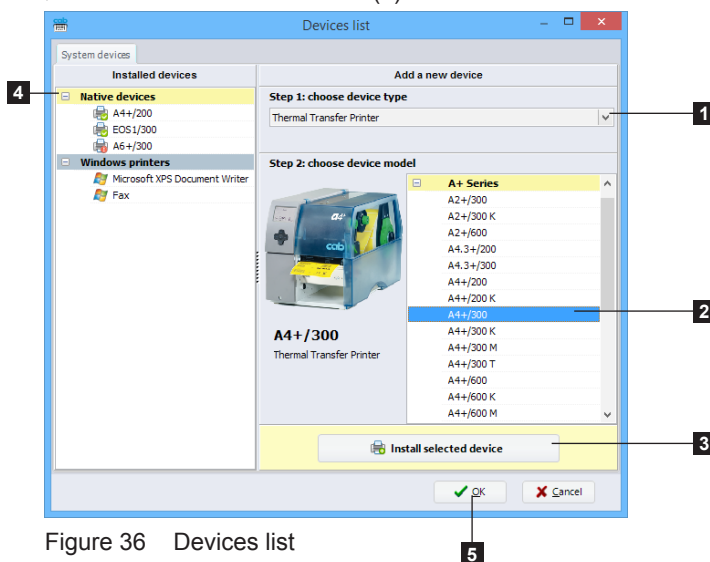


Figure 36 Devices list

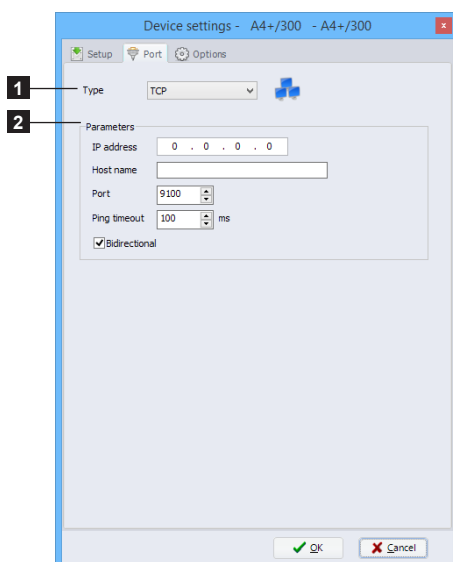


Figure 37 Device settings

After adding a device, the port selection window opens automatically.

- Select port type (1) and port settings (2).



Notice!

The available port types depend on the selected device.

4.2.2 Delete a device

- ▶ Select device model to delete in the installed devices list on the left.
- ▶ Right-click on it and select the `Remove device` command.

4.2.3 Rename a device

Each device is installed with a default name.

To change this name:

- ▶ Select device model in the installed devices list on the left.
- ▶ Right-click on it and select the `Rename device` command.
- ▶ Enter new name.

4.2.4 Configure a device

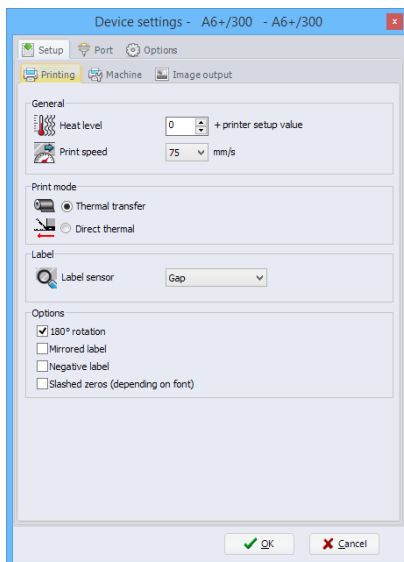


Figure 38 Device settings

To configure a device :

- ▶ Select the device to configure in the installed devices list on the left.
- ▶ Double-click on this device or right-click and select `Configure device`.
- ▶ Change the wished settings.
- ▶ Validate with the `OK` button.

4.2.5 Device options

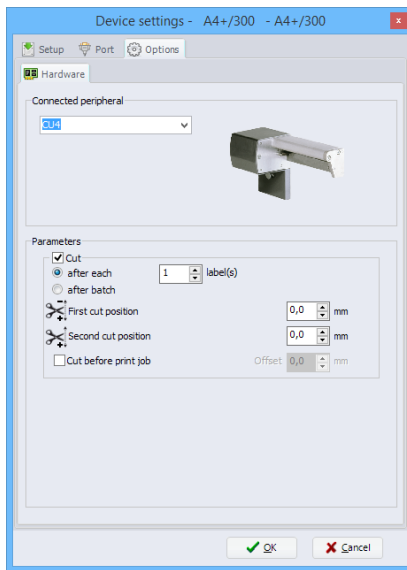


Figure 39 Device options

To add a device option :

- ▶ Select the device to configure in the installed devices list on the left.
- ▶ Double-click on this device or right-click and select `Configure device`.
- ▶ Go to `Options` tab.
- ▶ Select connected option in the list.
- ▶ Change the wished settings.
- ▶ Validate with the `OK` button.

4.2.6 System devices / Document devices

When a document is printed, system devices settings are automatically copied into it.

By next printing these document settings are automatically recalled.

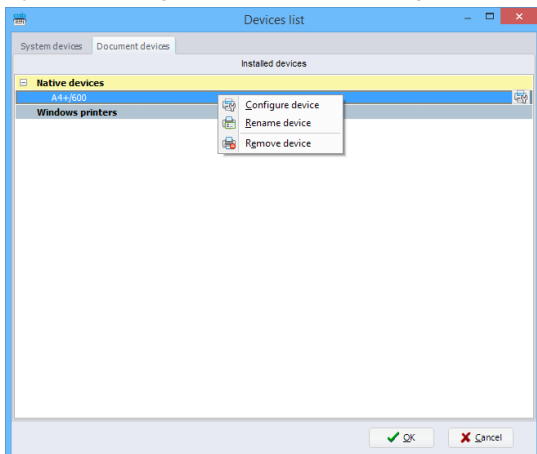


Figure 40 System / document devices list

Notice!



The `System devices` tab is only displayed in expert mode.
By default it is the `Document devices` tab which is displayed.



Attention!

An already printed document will use the device settings saved into it.

To change these settings, you have to change them in the device settings of this document and not in the system settings.

5.1 New label creation

There are 3 possibilities to create a new label on the welcome page.

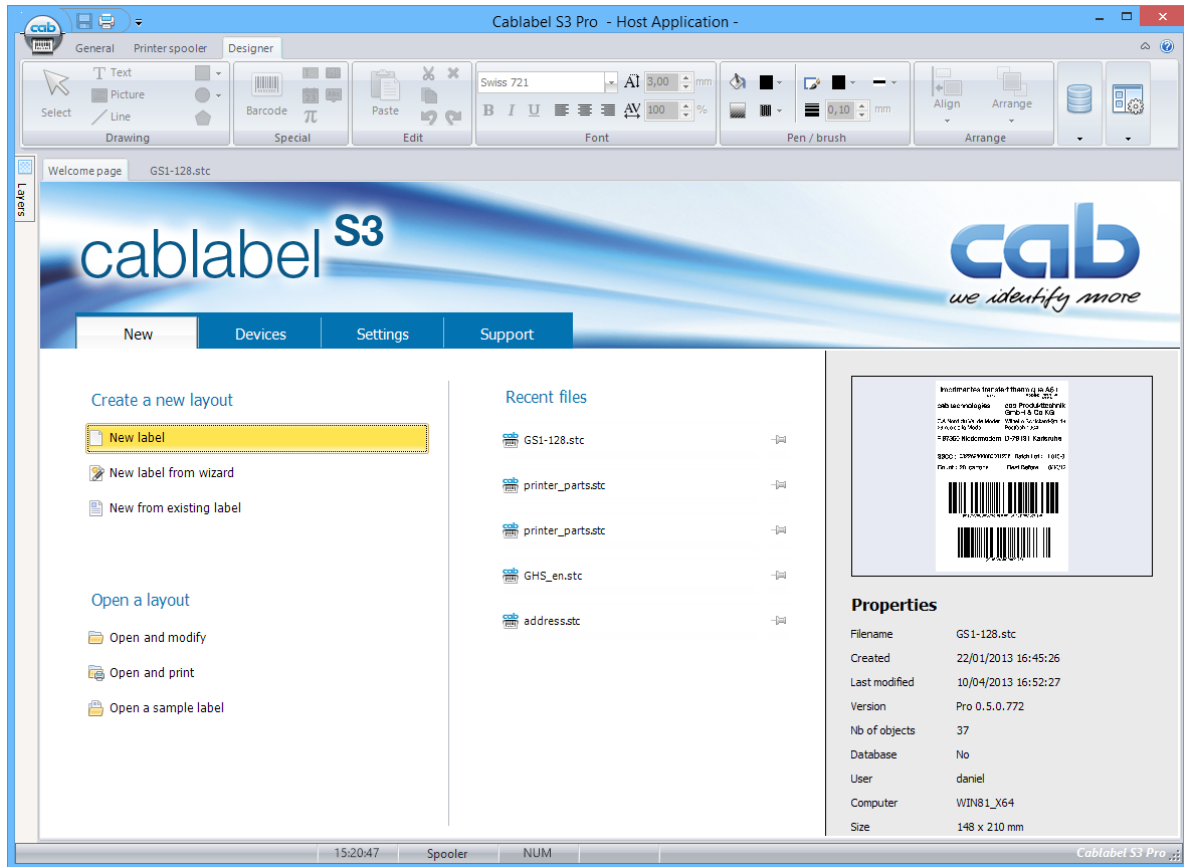


Figure 41 Welcome page

5.1.1 New blank label

- Click on the `New label` button to start the wizard.
- Set the informations of your label and its layout.
- Click on the `Next` button.

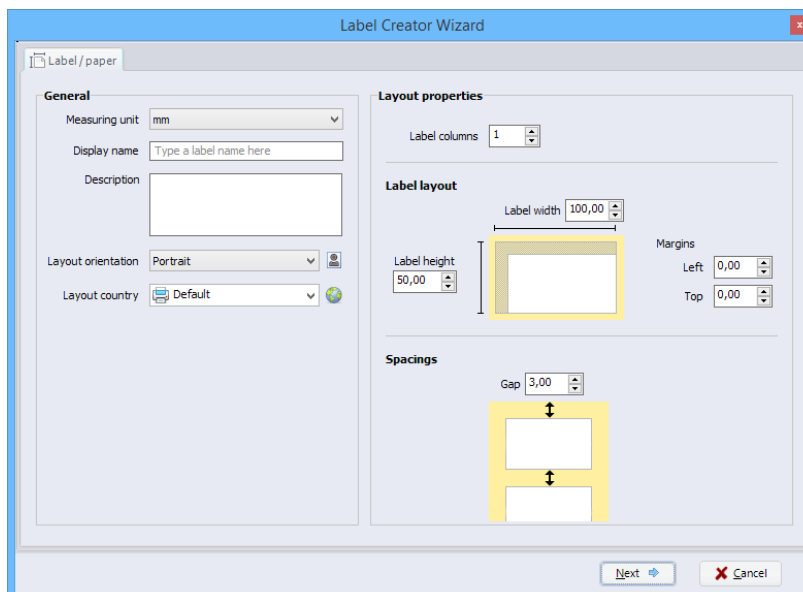


Figure 42 Label Creator Wizard

5.1.2 New label using the wizard

The Label Creator Wizard allows you, for example, to create your label from a pre-defined format among many existing references.

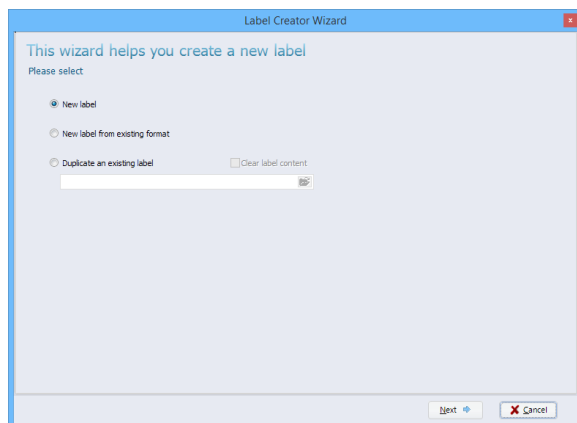


Figure 43 Label Creator Wizard for new labels

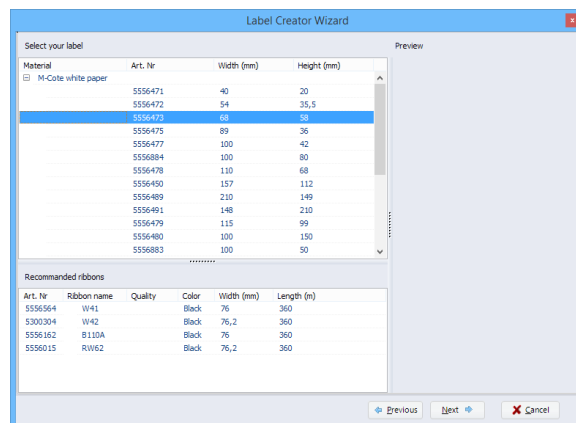


Figure 44 Pre-defined label formats

5.1.3 New label from an existing label

This option allows you to easily duplicate a label. You can choose to keep its content or only the label format.

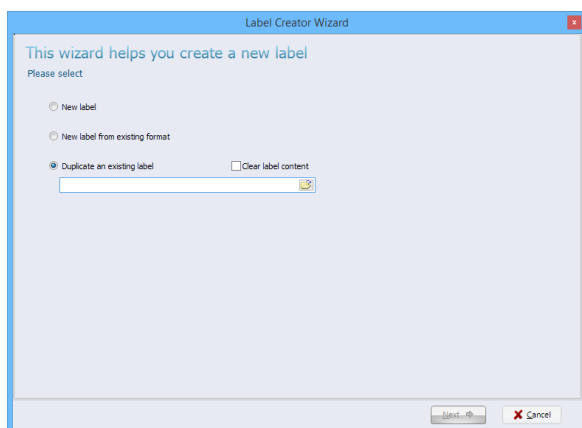


Figure 45 Duplicate a label

5.2 Inserting objects in the document

Notice!



Different settings are available for the objects. They are described in the help panel on the right, which is hidden by default. You can display this panel by clicking on the arrow icon (1) at the top right of the object properties window.

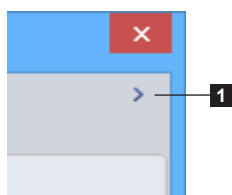


Figure 46 Show/Hide help

5.2.1 Inserting texts

To insert a text:

- Select the `text` object in the toolbar ► 3.2.1 Drawing toolbar
- Click somewhere in the label where you want to insert the object
- Enter the desired text in the edit field (1)
- Select the different options related to the text (2) such as font, size ...
- Validate by clicking on the `OK` button (3)

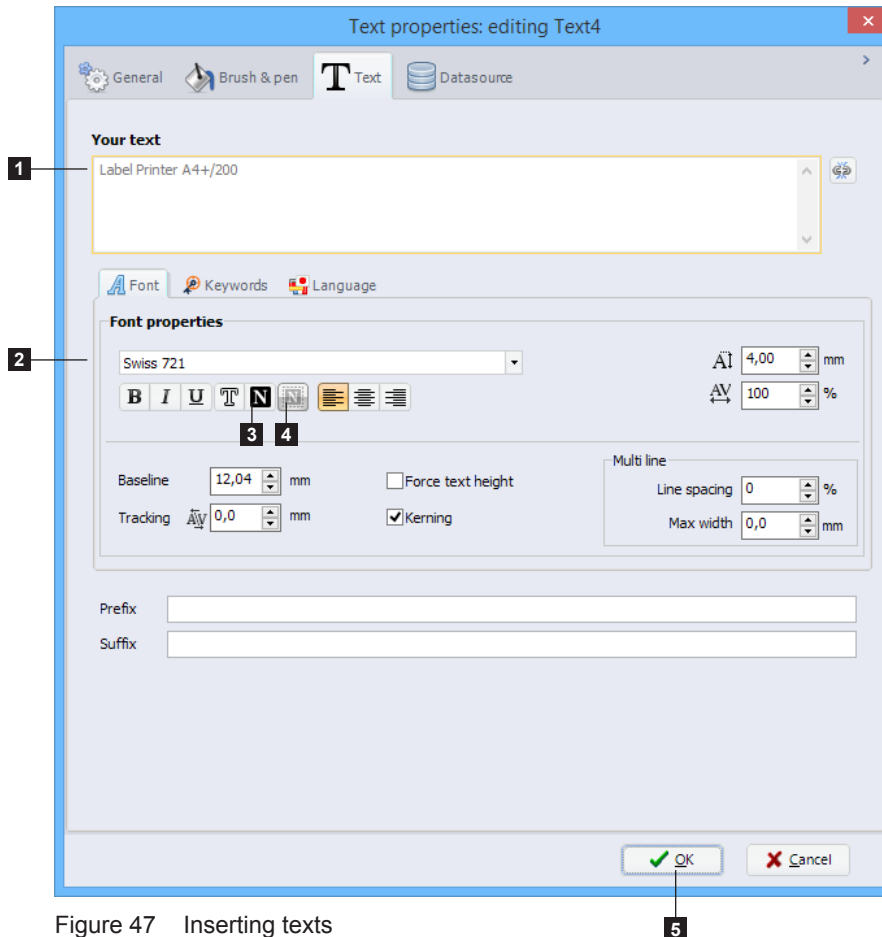


Figure 47 Inserting texts

• Negative text

It is also possible to put a text in negative and to specify the size of the area around this text. To do this:

- Activate the negative option by clicking on the button (3)
- Define the size of the area by clicking on the button (4)

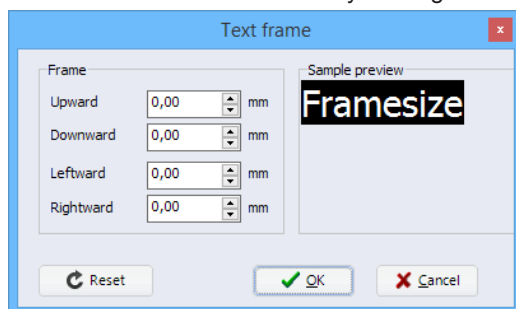


Figure 48 Text in negative

- Validate by clicking on the `OK` button

- **Highlighting keywords**

You can highlight (bold, italic ...) certain words in a sentence or a text (eg allergens).

For this, cablabel S3 has a built-in list of pre-defined keywords containing the most common allergens in different languages. You can also create your own custom list of keywords. ► 6.5 Keywords

When creating or editing a text:

- Select the **Keywords** (1) tab
- Activate the option **Formatting keywords** (2)
- Choose the type of settings to use (3)
- Validate by clicking on the **OK** button (5)

For specific settings:

- Select the desired language(s) from the dropdown list (3)
- Select the type of formatting (bold, italic...) (4)

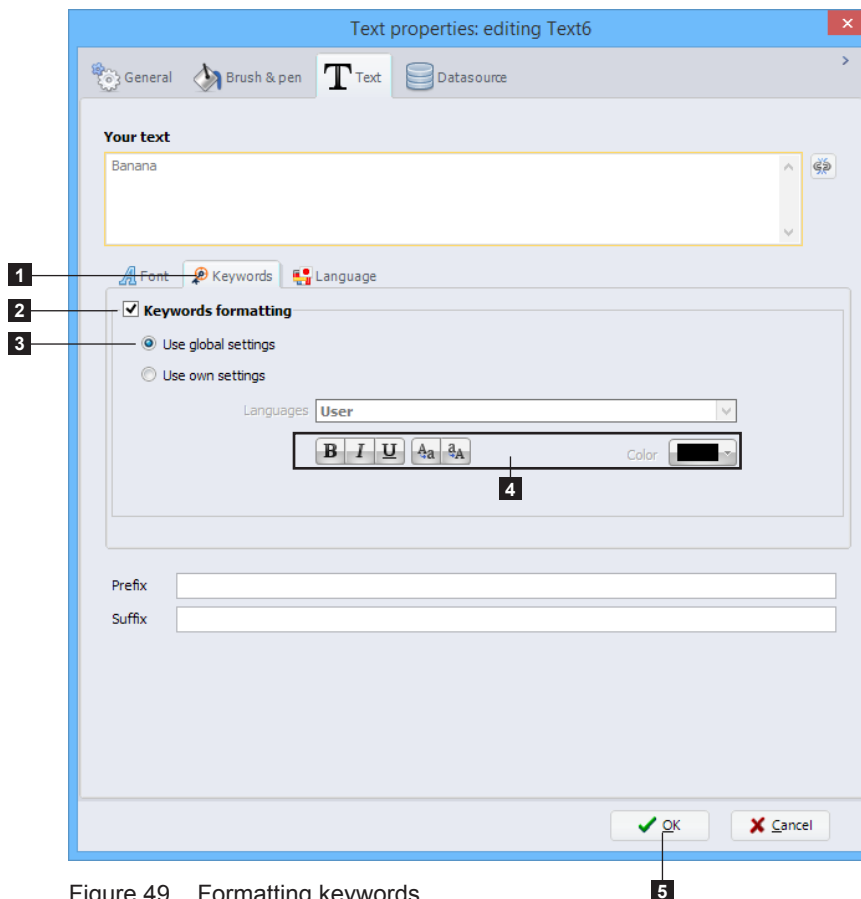


Figure 49 Formatting keywords

- **Hyphenation**

When creating a text, you can select to activate word hyphenation at end of line in a paragraph with a maximum defined width.

When creating or editing a text:

- ▶ Select the **Language** tab (1)
- ▶ Select the language for the text in the list (2)
- ▶ Activate / deactivate hyphenation by clicking on the checkbox (3)
- ▶ Validate by clicking on the **OK** button (4)

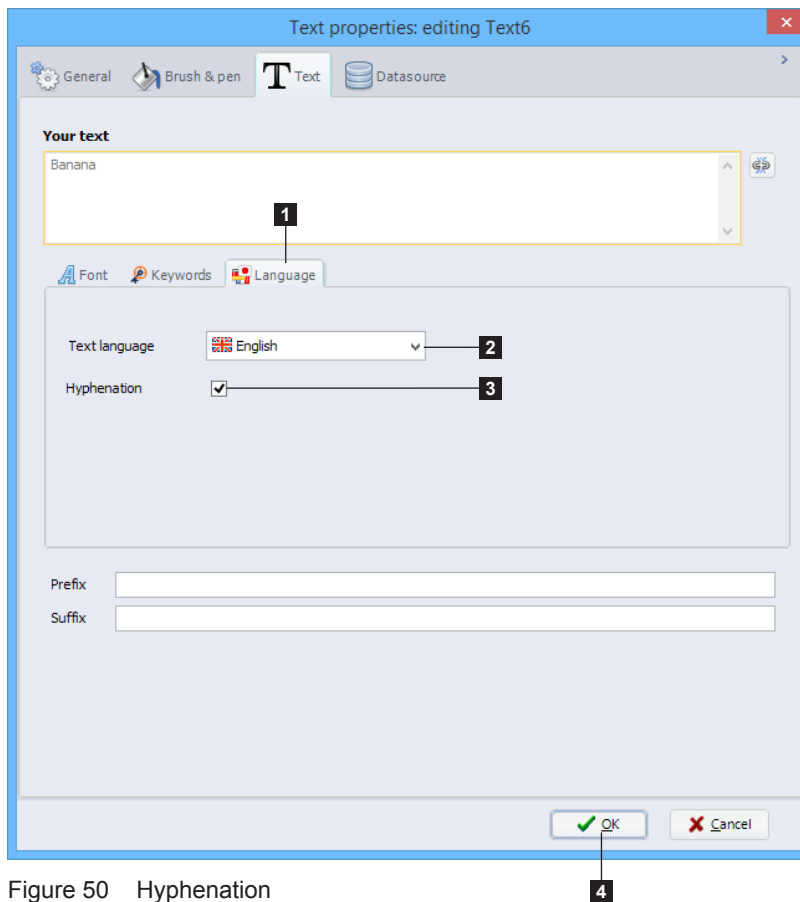


Figure 50 Hyphenation

5.2.2 Inserting pictures

To insert a picture:

- Select the **picture** object in the toolbar ► 3.2.1 Drawing toolbar
- Click somewhere in the label where you want to insert the object and draw the frame containing the picture at the required size
- Select a picture file (1) on your computer
- Validate by clicking the **Open** button (2) to insert the object

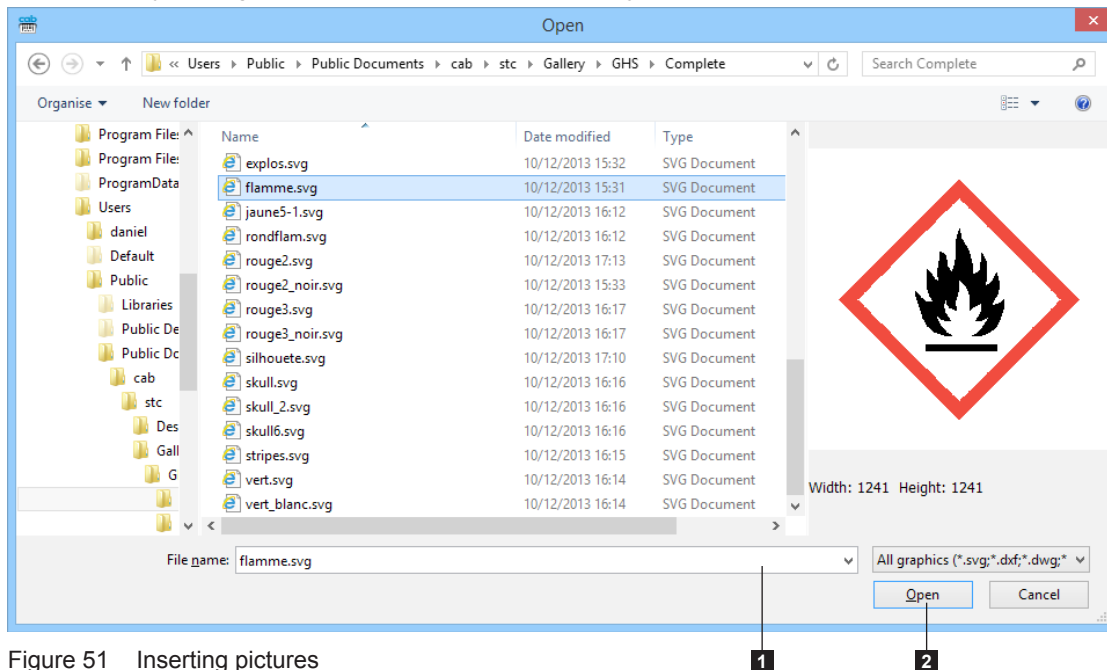


Figure 51 Inserting pictures

You can edit the properties of the picture to adjust various parameters, for this:

- Right click on the previously inserted picture and select **Properties** or double click on the picture
- Adjust the different parameters

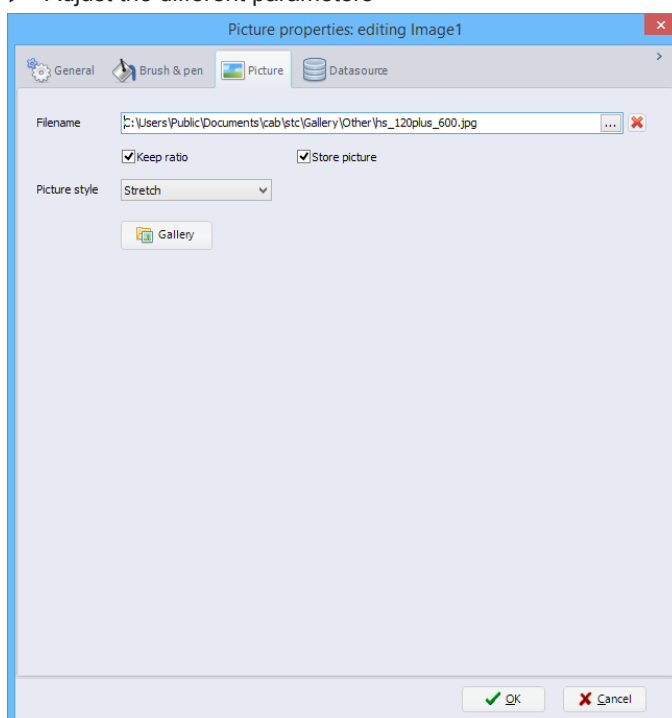


Figure 52 Picture properties

5.2.3 inserting graphical objects

To insert a graphic:

- ▶ Select the graphical object (line, rectangle...) in the toolbar ▷ 3.2.1 Drawing toolbar
- ▶ Click somewhere in the label where you want to insert the object and draw the graphic
- ▶ Click again to insert the object

5.2.4 Inserting barcodes

It is possible to select between many type of linear (1D) and two-dimensional (2D) barcodes.

To insert a barcode:

- ▶ Select the `barcode` object in the toolbar ▷ 3.2.2 Special toolbar
- ▶ Select barcode type (1)
- ▶ Set its properties (2)
- ▶ Specify a fixed value by using the input mask (3) or, depending on the barcode type, use the barcode wizard (4)
 - ▷ 6.3 Barcode wizard
- ▶ Validate by clicking the `OK` button (5)
- ▶ Click somewhere in the label where you want to insert the object

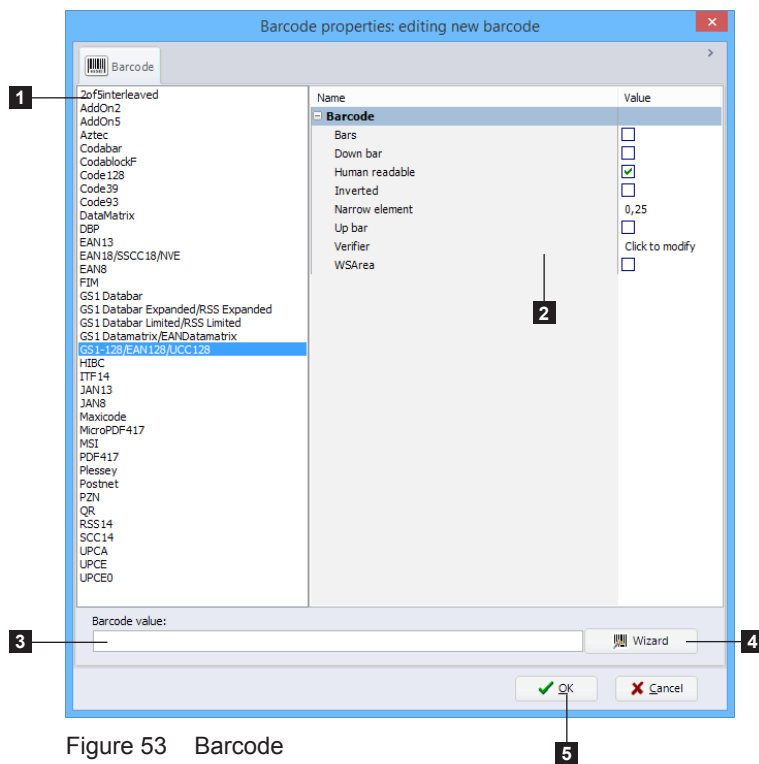


Figure 53 Barcode

Warning!

The input mask of the barcode value or the wizard are depending on the selected barcode type.

You can edit the properties of the barcode to adjust other parameters, for this:

- ▶ Right click on the previously inserted barcode and select `Properties` or double click on the barcode
- ▶ Adjust the different parameters

5.2.5 Inserting variable data

Notice!



Special objects are always composed of at least two elements: the object itself acting as a data source and a text/barcode/picture linked to newly created data source.

5.2.5.1 Prompt fields

A prompt field allows the user to enter data before printing without modifying the layout.

To insert a prompt field:

- Select the prompt field object ▷ 3.2.2 Special toolbar
- Adjust the different parameters

There are two types of prompt fields (1) :

- Standalone: the field is displayed on the printer's display and the user fills it directly on the printer.
- Formular: the user fills it in the software before the printing starts.

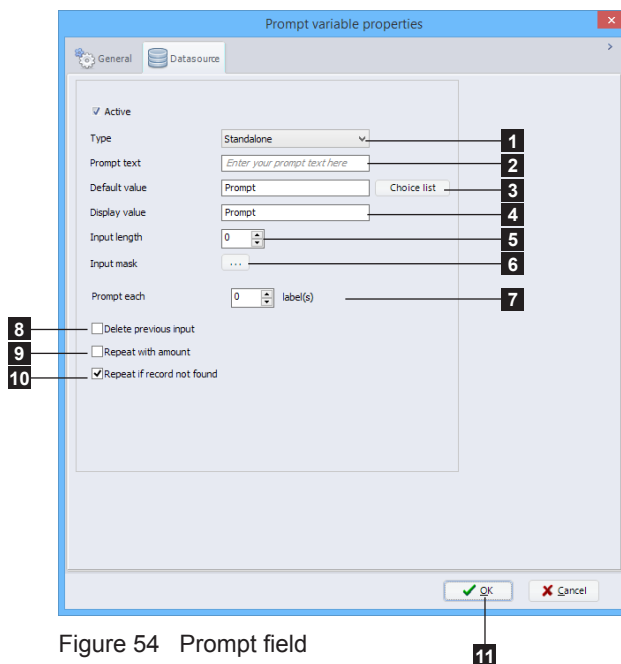


Figure 54 Prompt field

1. Type of prompt
2. Displayed prompt text which will be asked for
3. Value displayed to the user as default for this prompt or choice list ▷ page 29
4. Value displayed at screen when no value is given, this is useful when you don't have a default value, otherwise you won't see where the prompt is placed on the label
5. Length of the input line (0 = no size limitation)
6. Masks the input values, this is useful for the user so he can't give in wrong values
7. Specifies how often the prompt should appear (0 = prompt appears only at start of job)
8. Deletes the previous input value on next prompt
9. Repeats the prompt when the printer asks for the input of the amount of labels
10. Repeats the prompt if a record could not be found in a database

- Validate by clicking on the OK button (11)
- Click somewhere in the label where you want to insert the object

- **Choice list**

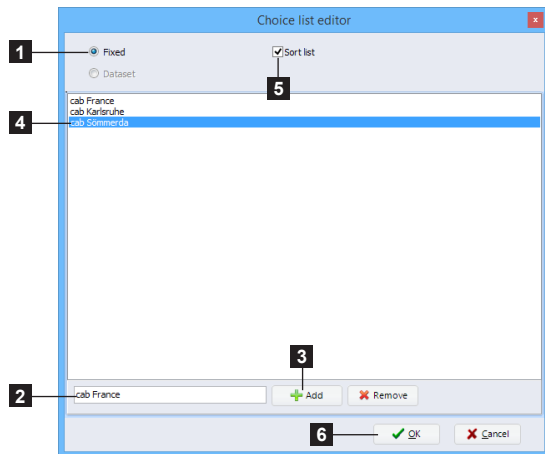


Figure 55 Fixed choice list

1. Select the **Fixed** list type (1)
2. Enter the text (2) to add to the list
3. Click the **Add** button (3) to add the text to the list (4)
4. You can also choose to sort the list alphabetically (5)
5. Validate by clicking on the **OK** button (6)

Notice!

When the type of prompt field is set to **Standalone**, the operation will depend on the printer model. Only EOS printers support this feature.

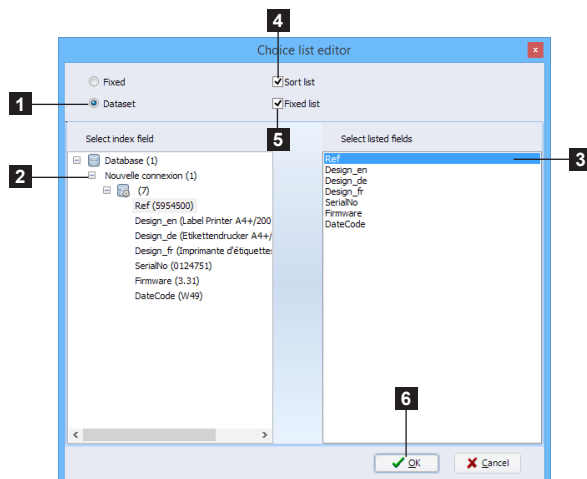


Figure 56 Dataset choice list

When the type of prompt field is set to **Formular**, it is possible to select a choice list from a dataset.

1. Select the **Dataset** list type (1)
2. Select the connection to use as well as the index field
3. Select the listed field(s)
4. You can also choose to sort the list alphabetically
5. The user can enter other data than those listed by disabling **Fixed** list
6. Validate by clicking on the **OK** button

5.2.5.2 Counter

A counter allows to create an automatic counting during printing.

To insert a counter:

- Select the counter object ► 3.2.2 Special toolbar
- Adjust the different parameters

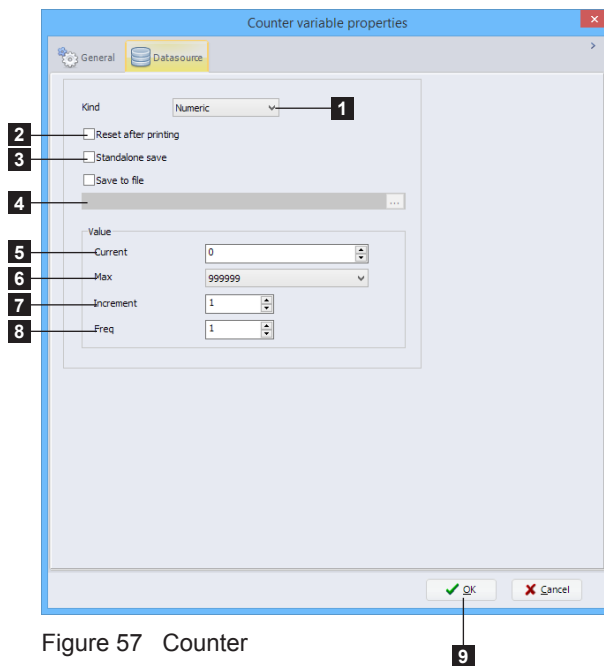


Figure 57 Counter

1. Kind of counter, numeric, alpha, alphanumeric or hexa
2. The counter is reset to its start value after printing
3. The value of the counter is saved in the printer's default memory after printing
4. Allow to save the counter value on computer, for example to share a counter between different labels
5. Current value of the counter
6. Max value of the counter, which will restart at 0 after reaching this value
7. Increment value which can be positive or negative
8. Number of labels to print between each increment

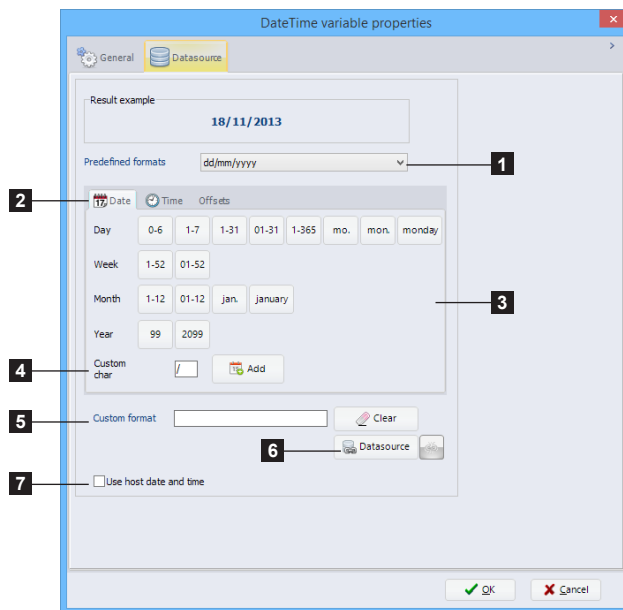
- Validate by clicking the OK button (9)
- Click somewhere in the label where you want to insert the object

5.2.5.3 Datetime fields

A datetime field allows to do a timestamp during printing.

To insert a datetime field:

- ▶ Select the datetime object ▷ 3.2.2 Special toolbar
- ▶ Adjust the different parameters



1. Choose in this list the predefined datetime format you want
2. Custom parameters of date, time or offsets
3. Wizard to create a custom datetime field
4. A char which can be used as a separator for example
5. Manual edition of a custom format
6. Allow to select a variable containing the datetime format
7. Use the computer clock instead of the printer clock

Figure 58 Datetime field

Date parameters:

- d: numeric day in 1 or 2 digits, 1-31 (ex: 15)
- dd: numeric day always in 2 digits, 01-31 (ex: 15)
- dd2: first 2 letters of day (ex: th for thursday)
- ddd: first 3 letters of day (ex: thu for thursday)
- dddd: complete weekday name (ex: thursday)
- d1: numeric day of the year (ex: 126)
- w: numeric day of the week, 1-7, starting at 1 for monday
- w0: numeric day of the week, 0-6, starting at 0 for sunday
- ww: numeric week in 1 or 2 digits, 1-52
- ww2: numeric week always in 2 digits, 01-52
- m: numeric month in 1 or 2 digits, 1-12
- mm: numeric month always in 2 digits, 01-12
- mmm: first 3 letters of month (ex: jan for january)
- mmmm: complete month name (ex: january)
- yy: numeric year in 2 digits
- yyyy: numeric year in 4 digits

Time parameters:

- H12: numeric hour in 12-hour form in 1 or 2 digits, 1-12
- H012: numeric hour in 12-hour form always in 2 digits, 01-12
- H24: numeric hour in 24-hour form in 1 or 2 digits, 1-24
- H024: numeric hour in 24-hour form always in 2 digits, 01-24
- ISOTIME: numeric time in ISO standard format
- XM: am/pm indicator
- nn: numeric minutes always in 2 digits
- ss: numeric seconds always in 2 digits

It is possible to create datetime offsets with fixed or variable offset type.

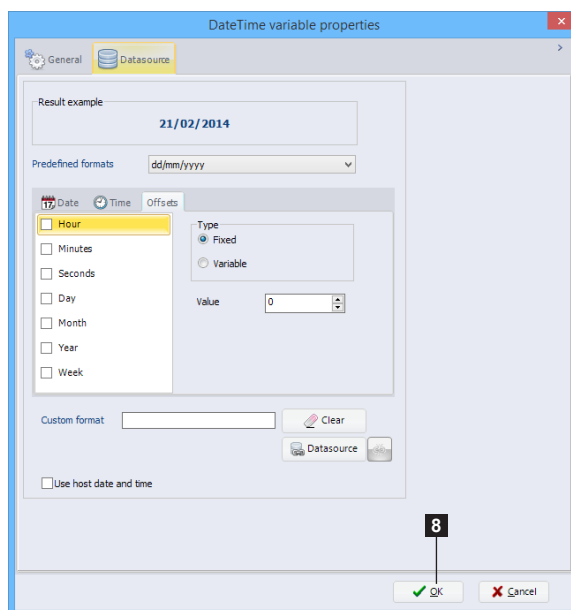


Figure 59 Datetime offsets

- Validate by clicking the OK button (8)
- Click somewhere in the label where you want to insert the object

5.2.5.4 Formula

A formula allows to do an operation between two or more operands, as for example a calculation.

To insert a formula field:

- Select the formula object ▷ 3.2.2 Special toolbar
- Adjust the different parameters
- Validate by clicking the OK button (8)
- Click somewhere in the label where you want to insert the object

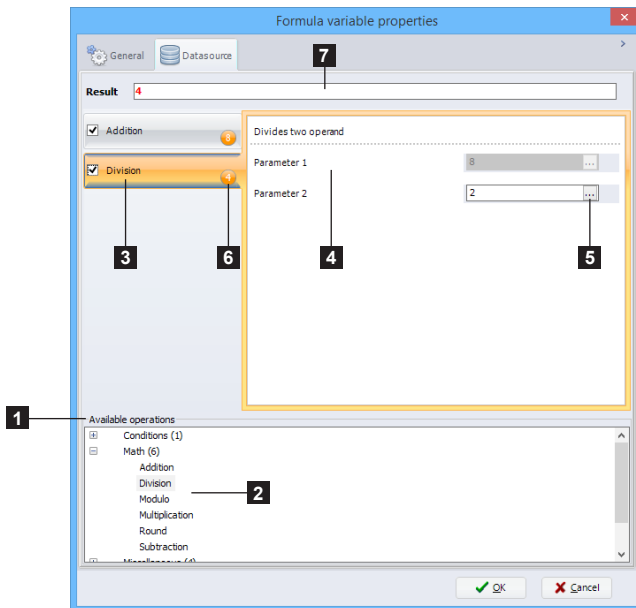


Figure 60 Formula

To add an operation:

- Select the operation type in the list (1) ▷ Table 2.
- Double-click on the selected operation (2) to add it to the list (3).
It is possible to combine more operations.
- Fill out the operands (4), with a fixed data or by selecting a variable data (5).
By right-clicking, it is possible to add or delete operands (depending on the operation) or even to change their order. The same applies to ordering the operations.
▷ Figure 54
- Redo previous steps to add another operation.
Intermediate result (6) and final result (7) of the operations are displayed.
- Validate with the OK button.

You can access different options when right-clicking on the operands:

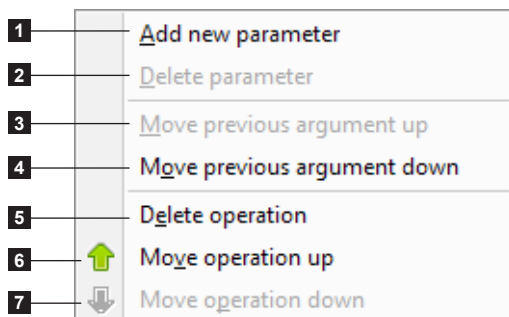


Figure 61 Formula properties

1. Adds a new parameter to the formula (depends on the formula)
2. Delete the selected parameter of the formula
3. Move the argument up
4. Move the argument down
5. Deletes the selected operation

Only if there are several operations:

6. Move the selected operation up
7. Move the selected operation down

| Operation | Category | Description |
|----------------|---------------|--|
| IfElse | Conditions | Return the result when condition is true else return is optional |
| Addition | Math | Add two or more operands |
| Division | Math | Divide two operands |
| Modulo | Math | Mathematical modulo of two operands |
| Multiplication | Math | Multiplication of two or more operands |
| Round | Math | Round operand |
| Subtraction | Math | Subtraction of two or more operands |
| Formatting | Miscellaneous | Format operand |
| Split | Miscellaneous | Extracts the element at index position (starting at 1) |
| Trim | Miscellaneous | Delete non printable characters at the beginning and end of the string |
| TrimLeft | Miscellaneous | Delete non printable characters at the beginning of the string |
| TrimRight | Miscellaneous | Delete non printable characters at the end of the string |
| Modulo10 | Check digits | Modulo10 of operand |
| Modulo36 | Check digits | Modulo36 of operand |
| Modulo43 | Check digits | Modulo43 of operand |
| Concat | String | Add one or more strings to another |
| Left | String | Return x characters starting at the beginning of the string |
| Len | String | Return the length of a string |
| Lowercase | String | Return the string in lowercase |
| Mid | String | Return x characters starting at y position of the string |
| Right | String | Return x characters starting at the end of the string |
| Uppercase | String | Return the string in uppercase |

Table 2 Formula list

5.2.5.5 Database

Before inserting a database field, you have to create the connection to this database.

▷ 3.2.7 Database toolbar and 6.4 Database wizard

To insert a database field:

- ▶ Insert a new text, barcode or picture
- ▶ Select the **Datasource** tab
- ▶ Under **Database**, select the wished field
- ▶ Validate by clicking on the **OK** button

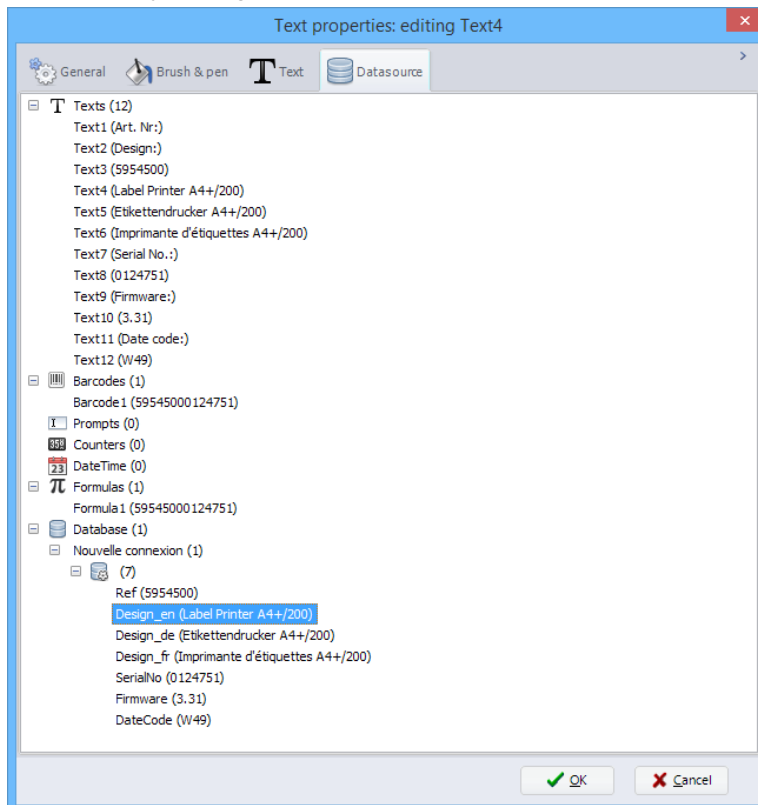


Figure 62 Datasource tab

5.3 Document settings

Document settings are available under the **Display options** button in the **Designer** ribbon. You can change the view options of the software, as well as the custom settings of current label, like grid, style, colors and background.

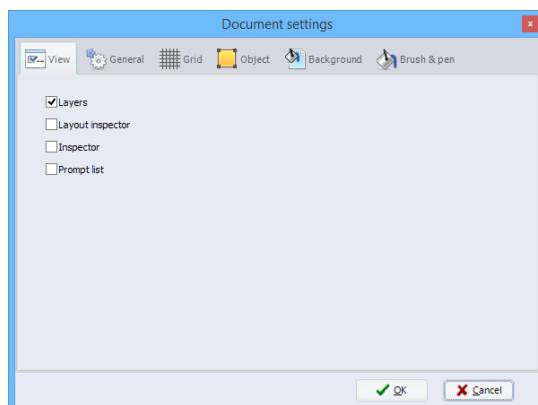


Figure 63 Document settings

Attention!

In order to avoid deformation of the picture inserted in the background, its dimension ratio has to match with the label size ratio.

Custom document settings are only saved with current label.

Each new label will get the global settings as default.

5.4 Label printing

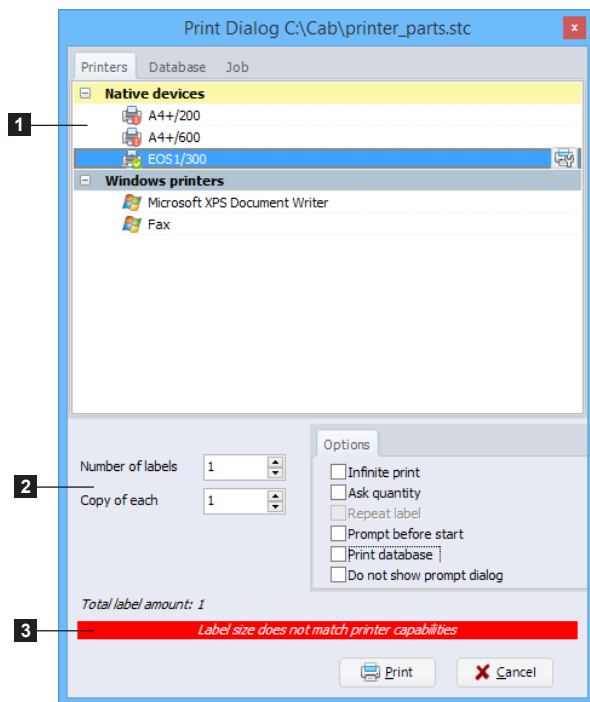


Figure 64 Printers tab

The **Print** button  in the general ribbon allows you to print your label.

- Click on the **Print** button to open the print dialog
- In **Printers** tab, select the printer where to print the label (1)
- Change wished options and number of labels (2)
- Validate with the **Print** button



Notice!

During printer selection, if **Expert mode** is activated in the **Global settings**, a warning message is displayed when the label is out of the printing range (3).

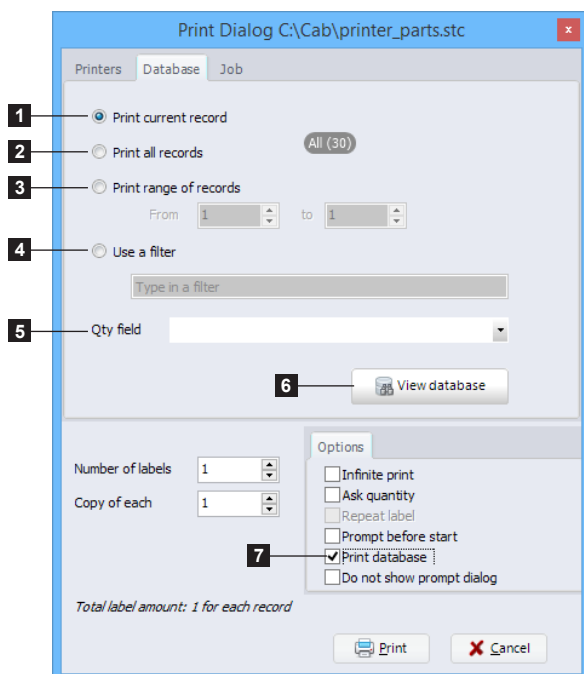


Figure 65 Database tab

In the **Database** tab, it is possible to select the wished records to print..

1. Print only the current record on which you are positioned
2. Print all records from the database or from the custom selection
3. Print records from selected range
4. Create a filter manually
5. If specified in the database, define the field with the printing quantities
6. Overview of database with a filter builder wizard, in order to do a custom records selection and set the printing quantities ► Figure 60



Attention!

In order to access to the different selections, you need first to define a **database connection**, then check the box **Print database** (7) in the printing options.

By viewing the database it is possible to filter and select the records to be printed with their quantities.

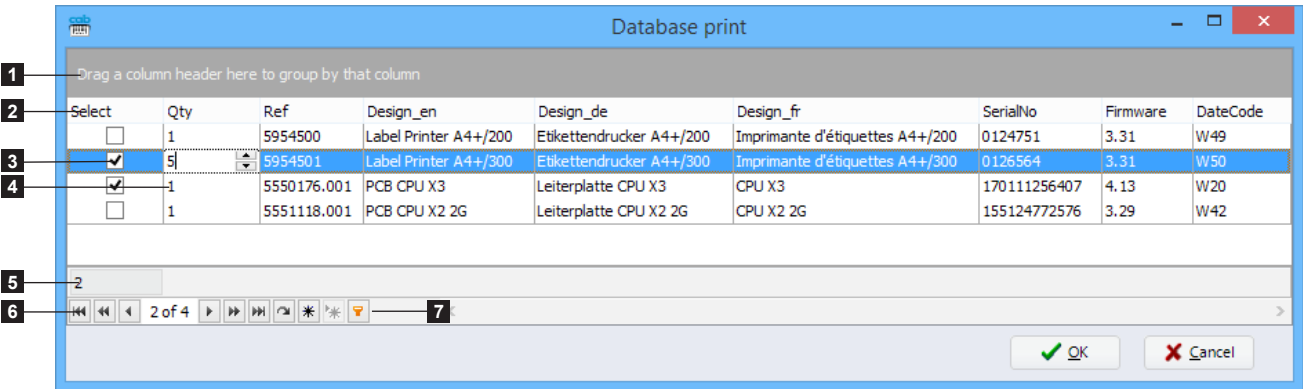
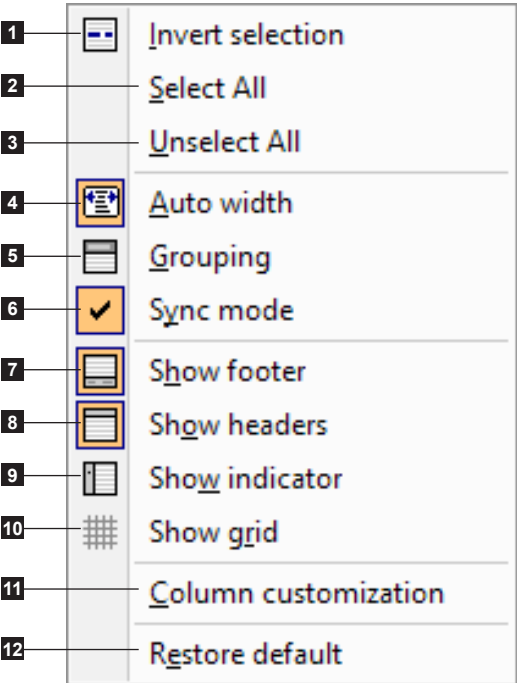


Figure 66 Printing a database

- | | |
|----|---|
| 1. | Field grouping by dragging headers in this part |
| 2. | Field names with order and filter possibility |
| 3. | Records selected for printing |
| 4. | Quantity of labels to print for the selected record |
| 5. | Number of records selected for printing |
| 6. | Navigating through records on the database |
| 7. | Custom filter wizard |

Some specific options are accessible by a right mouse click in the table:



- 1. Invert the selected records for printing
- 2. Select all records for printing
- 3. Deselect all records for printing
- 4. Automatically adjust column width
- 5. Show / hide the panel for grouping by fields
- 6. Synchronize the label with the selected record
- 7. Show / hide footer
- 8. Show / hide headers (field names)
- 9. Show / hide the positioning indicator
- 10. Show / hide the grid
- 11. Show / hide column customization
- 12. Restore default settings

Figure 67 Database viewing and printing options

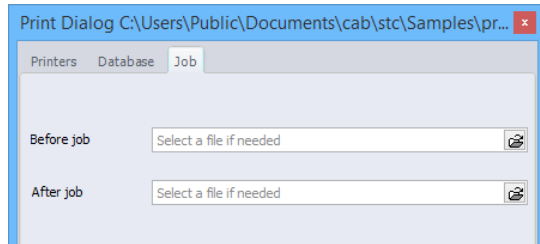


Figure 68 Job tab

The `Job` tab, allow to send files with JScript code, to run on printer before or after printing a label.

5.4.1 Printing on a two color printer

When printing a label on a two color printer (for example XC4 or XC6), the printer driver will automatically send objects defined in black color to second printhead (main color) and all objects defined with another color than black to first printhead (secondary color).

For more informations about the printhead allocation ▷ Printer operator's manual.



Attention!

When using a picture the colors will automatically be sent to the right printhead depending on the settings set in the color management window.

More information ▷ page 23 "Color management"


5.4.2 Printing on a double sided printer

To print a label on a double sided printer (for example XD4), the label width needs to be defined as the double of the real width.

First half of the label matches the top of the label and the second half the bottom.

For more informations ▷ Printer operator's manual.

5.5 Save a label on a memory card

The **Save to memory card**  button in the general ribbon allows you to export your label to a memory type (Compact Flash card, USB memory stick, IFFS...) to use it in standalone mode.

5.5.1 Saving to a printer, a file or a card reader

- Click on the **Save to memory card** button to open the upload window.
- Select the printer model where you want to export the label (1).
- Select the target (Card reader, File, Printer or Database) (2).
- Depending on chosen target, select the memory card location (3).

Notice!

The listed memory card locations are depending on the printer model.
The **Default** location is the location selected in the printer menu.
If another location is selected please ensure that it is present.

- Enter a file name, select the wished options and the number of labels (4).
- Validate with the **OK** button.

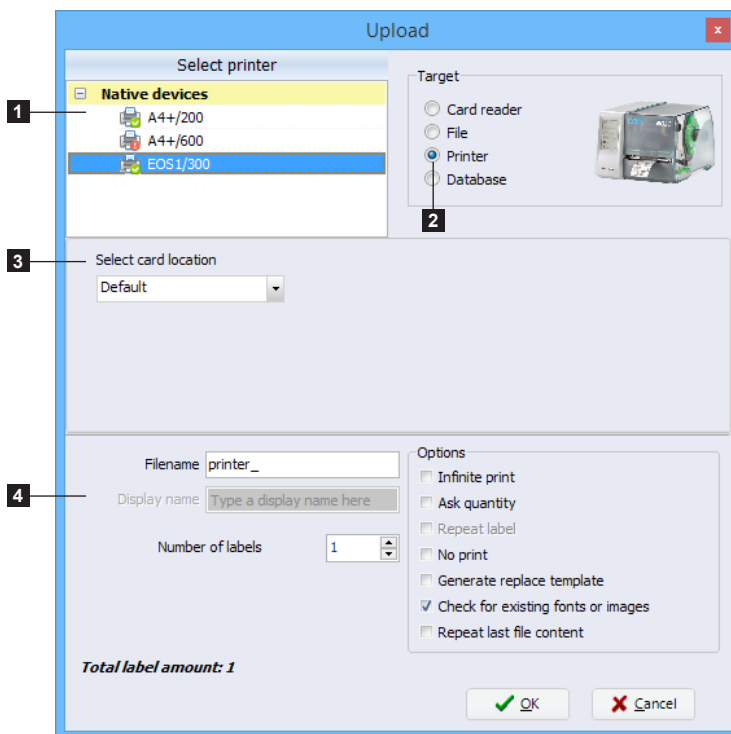


Figure 69 Save to memory card

5.5.2 Saving in a database

Notice!



Database saving option is only available if a connection to a database exists. It is this connection that will be used to list the fields.

A label saved in a database can be edited or modified ► 6.5 Layout table management

- Click on the **Memory card** button to open the upload window
- Select the printer model where you want to export the label (1).
- Select the target **Database** (2)
- Select the table of the database (3)
- Select the field that will contain the label filename (4)
- Select the field where the label will be stored (5)
- Select the upload options (6) if you want to store fonts and pictures, these may already be present in the printer (saving space and increasing data transfer speed).
- Enter a filename, select the wished options and the number of labels (7)
- Validate with the **OK** button to save the label in the database

The screenshot shows the 'Upload' dialog box with the following elements and annotations:



- 1**: Points to the 'Native devices' list under 'Select printer', which includes 'A4+/200', 'A4+/600', and 'EOS1/300'.
- 2**: Points to the 'Database' radio button under the 'Target' section.
- 3**: Points to the 'Table name' dropdown menu, which is set to 'Layouts'.
- 4**: Points to the 'Name field' dropdown menu, which is set to 'Layout_Name'.
- 5**: Points to the 'Label content field' dropdown menu, which is set to 'Layout_Content'.
- 6**: Points to the 'Upload options' section, which includes checkboxes for 'Fonts' and 'Pictures' (both checked).
- 7**: Points to the 'Number of labels' spinner box, which is set to '1'.

Other visible elements include:

- Filename**: PRINTERP
- Display name**: Type a display name here
- Options**: Includes checkboxes for 'Infinite print', 'Ask quantity', 'Repeat label', 'No print' (checked), 'Generate replace template', 'Check for existing fonts or images' (checked), and 'Repeat last file content'.
- Total label amount**: 1
- Buttons**: OK and Cancel.

Figure 70 Saving a label in a database

5.6 Keyboard shortcuts

| Keys | Description | Plug-in |
|---|--|--------------|
| Ctrl+A | Select all | Designer |
| Ctrl+A | ASCII dump mode | Spooler |
| Ctrl+B | Insert barcode | Designer |
| Ctrl+C | Copy | Designer |
| Ctrl+C | Reset printer | Spooler |
| Ctrl+E | Send email to cab support | Global |
| Ctrl+F | Format memory card | Spooler |
| Ctrl+I | Insert picture | Designer |
| Ctrl+L | Insert line | Designer |
| Ctrl+N | Create new label | Global |
| Ctrl+O | Open file | Global |
| Ctrl+P | Print | Global |
| Ctrl+R | Restart printer | Spooler |
| Ctrl+S | Save | Global |
| Ctrl+T | Insert text | Designer |
| Ctrl+V | Paste | Designer |
| Ctrl+W | Close current label | Global |
| Ctrl+X | Cut | Designer |
| Ctrl+Z | Undo | Designer |
| Ctrl++ | Zoom in | Designer |
| Ctrl+- | Zoom out | Designer |
| Ctrl+up arrow | Move job up | Spooler |
| Ctrl+down arrow | Move job down | Spooler |
| Ctrl+mouse scroll | Zoom in / zoom out | Designer |
| Ctrl+Alt+W | Preview laser | Global laser |
| Ctrl+Shift+A | Deselect all | Designer |
| Ctrl+Shift+B | Bold | Designer |
| Ctrl+Shift+C | Center text | Designer |
| Ctrl+Shift+I | Italic | Designer |
| Ctrl+Shift+L | Align text to the left | Designer |
| Ctrl+Shift+P | Memory card | Global |
| Ctrl+Shift+R | Align text to the right | Designer |
| Ctrl+Shift+S | Save as | Global |
| Ctrl+Shift+U | Underline | Designer |
| Ctrl+Shift+Z | Redo | Designer |
| Ctrl+  / Ctrl+  | Orientate the layout without turning the objects | Designer |
| Alt+double click on object | Edit variable data | Designer |
| Shift+move window | Window docking | Global |
| Del | Delete selected object | Designer |
| Del | Delete selected job | Spooler |
| Del | Delete file from memory card | Spooler |
| Space | Pause / resume printer | Spooler |
| F2 | Rename device | Global |

| Keys | Description | Plug-in |
|------|---|----------|
| F2 | Print selected label from memory card | Spooler |
| F3 | Print selected label from memory card with specified number of labels | Spooler |
| F5 | Configure printer | Spooler |
| F6 | Test print | Spooler |
| F7 | Cursor guide | Designer |
| F8 | Form feed | Spooler |
| F9 | Snap to grid | Designer |
| F10 | Devices list | Global |
| F11 | Display options | Designer |
| F12 | Page setup | Designer |

Table 3 Keyboard shortcuts

Plug-ins are additional modules of the basic cablabel S3 software. These modules add functions and possibilities to the basic software.

The provided plug-ins are depending on the cablabel S3 version.

To view or edit the list of plug-ins, just click on the **About** button in the toolbar of the **General** tab ▸ 3.1 Main Interface

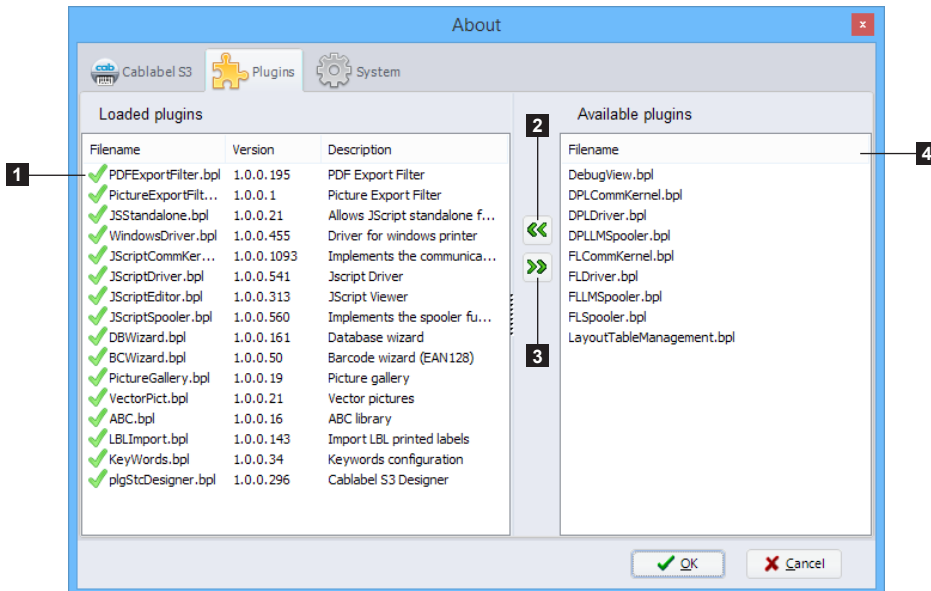


Figure 71 Plugins

To add a plug-in:

- Select the plug-in in the **Available plugins** list (4)
- Click on the add button (2), the plug-in will be added to the **Loaded plugins** list (1)
- Restart cablabel so that the plug-in is loaded correctly

To delete a plug-in:

- Select the plug-in in the **Loaded plugins** list (1)
- Click on the delete button (3), the plug-in will be added to the **Available plugins** (4)
- Restart cablabel so that the plug-in is unloaded correctly

Notice!



An icon is displayed just before the plugin name to indicate its status.



The plugin is correctly loaded



The plugin has been removed but the program has not been restarted



The plugin has been added but the program has not been restarted

The plugin could not be loaded because:




- a new activation is required
- it doesn't match the version of the program
- an error occurred while loading

6.1 Printer spooler

The printer spooler is a useful element for users who daily manage multiple print jobs: it is his printing progress dashboard.

Printer states are displayed in the spooler, which allows to monitor devices from the printing computer. If a printer is unavailable, jobs are automatically queued.



Warning!

Jobs are lost when the program is closed.

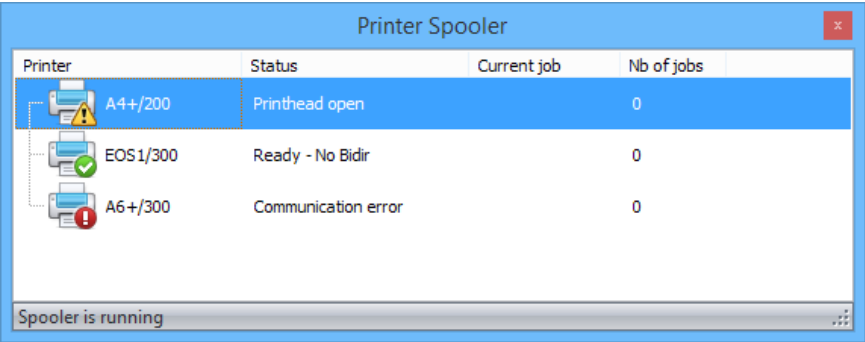
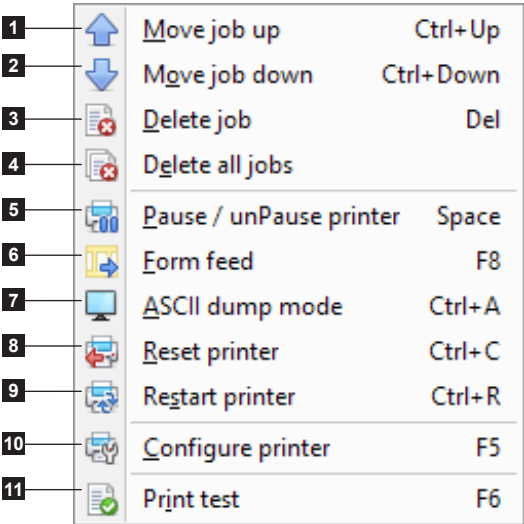


Figure 72 Printer spooler

6.1.1 Managing print jobs and printer functions

The spooler manages all print jobs, let change their priorities, delete jobs or do some special commands on the printer like reset or start a job in ASCII dump mode.

Some specific options are accessible by a right mouse click on a device or on a print job:



- Print jobs functions
- 1. Move selected job up
 - 2. Move selected job down
 - 3. Delete selected job only
 - 4. Delete all jobs
- Printer functions
- 5. Suspend / resume the printer
 - 6. Make a form feed on printer
 - 7. Start ASCII dump mode
 - 8. Reset the printer
 - 9. Restart the printer
 - 10. Configure the printer
 - 11. Start a print test

Figure 73 Printer spooler options

Advanced status, memory content or even the display of the printer can be shown with a double click on a printer in the spooler.

6.1.2 Printer status

In this tab you will find all information about the printer, like its firmware version, print status...

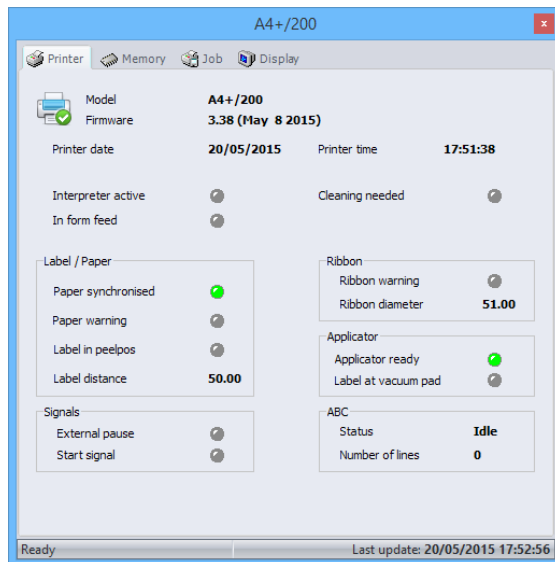


Figure 74 Advanced printer status

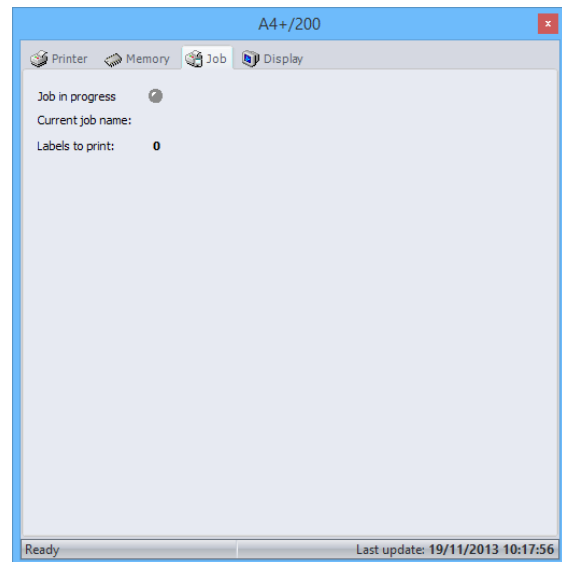


Figure 75 Printing jobs

6.1.3 Memory card management



Notice!

A memory card must be available in the default printer memory.

By displaying the memory card content, if you right click on a label file, it is also possible to print, delete directly a file or format the memory card.

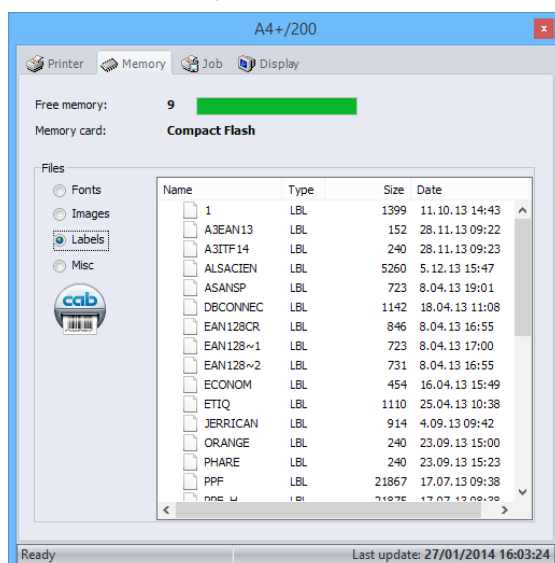


Figure 76 Memory card content

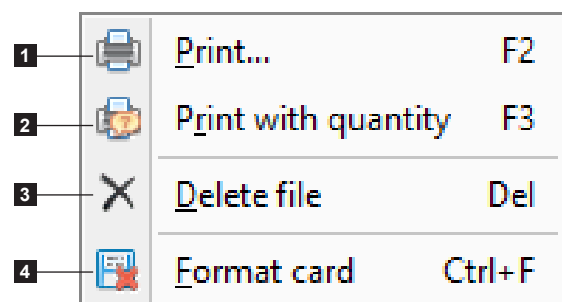


Figure 77 Interaction with the memory card

1. Print the selected file
2. Print the selected file and ask for the quantity
3. Delete the selected file
4. Format the memory card

6.1.4 Printer display

The `Display` tab shows the printer's display in real time.

Depending on the printer model, it is also possible to directly control the printer by clicking on its display commands.



Figure 78 Printer display

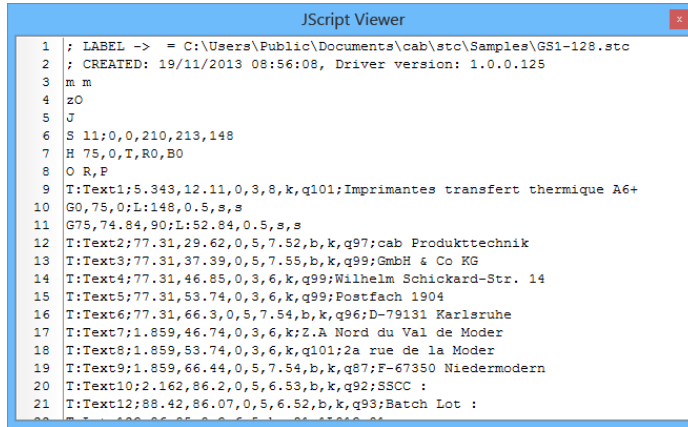
Notice!



- The printer's display can only be shown when the Ethernet port is used!
- Display and interaction with the printer's display is also depending on printer model.
Not all printers support these functions!

6.2 JScript code viewer

The JScript code viewer allows to see instantly the JScript code of the active label. Each modification in the label is returned in real time in the viewer.



```

JScript Viewer
1 ; LABEL -> = C:\Users\Public\Documents\cab\stc\Samples\GS1-128.stc
2 ; CREATED: 19/11/2013 08:56:08, Driver version: 1.0.0.125
3 m m
4 zO
5 J
6 S 11;0,0,210,213,148
7 H 75,0,T,R0,B0
8 O R,P
9 T:Text1;5.343,12.11,0,3,8,k,q101;Imprimantes transfert thermique A6+
10 G0,75,0;L:148,0.5,s,s
11 G75,74.84,90;L:52.84,0.5,s,s
12 T:Text2;77.31,29.62,0,5,7.52,b,k,q97;cab Produkttechnik
13 T:Text3;77.31,37.39,0,5,7.55,b,k,q99;GmbH & Co KG
14 T:Text4;77.31,46.85,0,3,6,k,q99;Wilhelm Schickard-Str. 14
15 T:Text5;77.31,53.74,0,3,6,k,q99;Postfach 1904
16 T:Text6;77.31,66.3,0,5,7.54,b,k,q96;D-79131 Karlsruhe
17 T:Text7;1.859,46.74,0,3,6,k;Z.A Nord du Val de Moder
18 T:Text8;1.859,53.74,0,3,6,k,q101;2a rue de la Moder
19 T:Text9;1.859,66.44,0,5,7.54,b,k,q87;F-67350 Niedermodern
20 T:Text10;2.162,86.2,0,5,6.53,b,k,q92;SSCC :
21 T:Text12;88.42,86.07,0,5,6.52,b,k,q93;Batch Lot :

```

Figure 79 JScript code viewer

Notice!



- The code can only be viewed after a first printing.
- The viewer only displays code after printing to a JScript device.
- The displayed code doesn't match necessarily the printing file.

6.3 Barcode wizards

6.3.1 UCC/EAN/GS1-128 and GS1 Datamatrix wizard

This barcode wizard helps you to create your GS1-128 or GS1 Datamatrix barcode.

To create a new barcode:

- Select the barcode type GS1-128/EAN128/UCC128 or GS1 Datamatrix
- Click on the Wizard button
- Choose an AI in the available AI's list (1).
- Double-click on the selected AI to add it to the list of selected AIs (3).
- Select AI's value type (fixed or variable) (4).
- Do previous steps again until you get the wished result (7).
- Validate with the OK button (8).

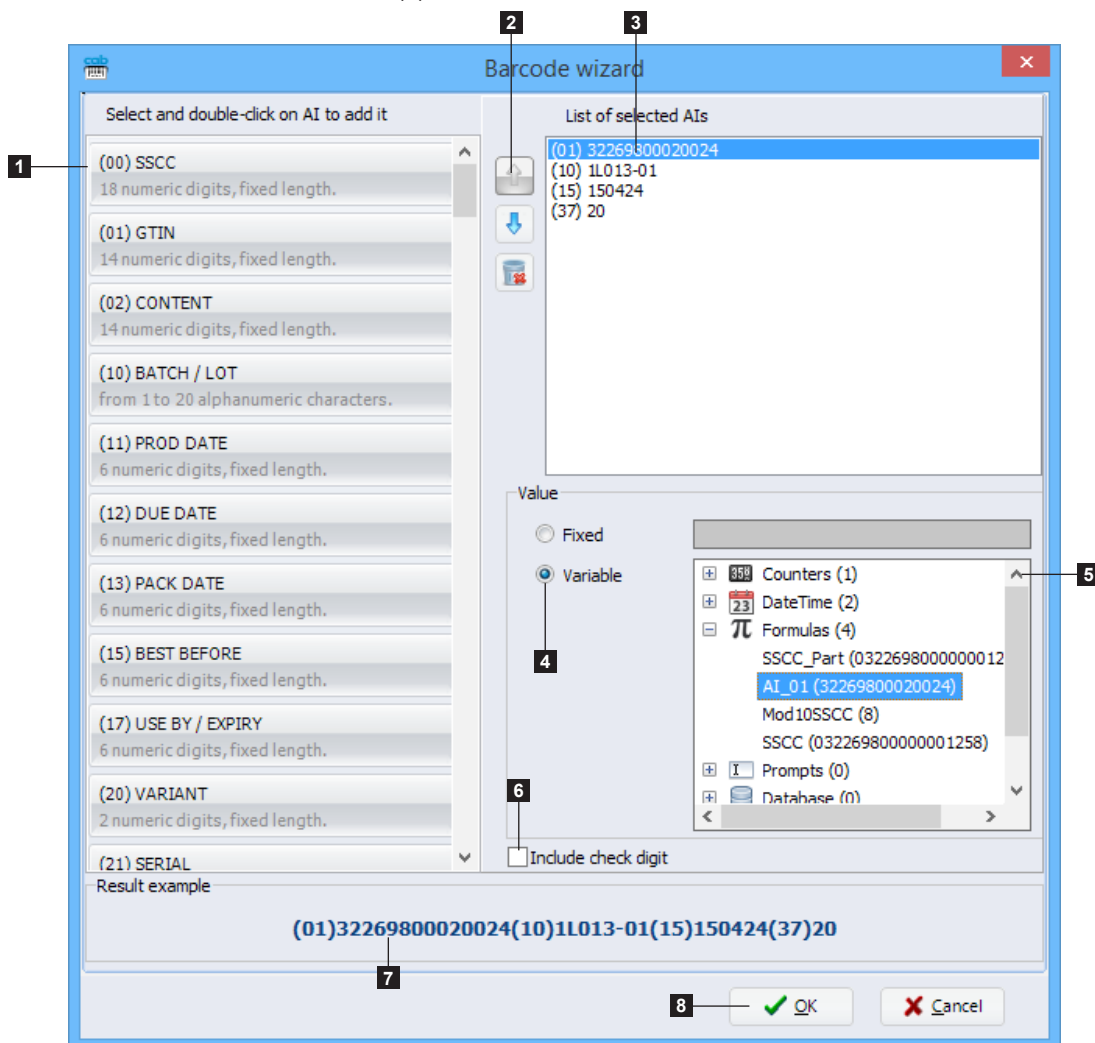


Figure 80 UCC/EAN/GS1-128 barcode wizard

- | | |
|----|--|
| 1. | Available AI's list |
| 2. | Move / delete an AI |
| 3. | Selected AI's list |
| 4. | Value type |
| 5. | Available variable data list |
| 6. | Include check digit (depending on selected AI) |
| 7. | Barcode content |

6.3.2 FACT wizard

This barcode wizard helps you to create FACT barcodes (especially used in the automotive industry).

To create a new barcode:

- Select the barcode type *Datamatrix*
- Click on the *Wizard* button
- Follow the same steps as with the GS1 wizard ► 6.3.1 UCC/EAN/GS1-128 and GS1 Datamatrix wizard
- Validate with the *OK* button (1).

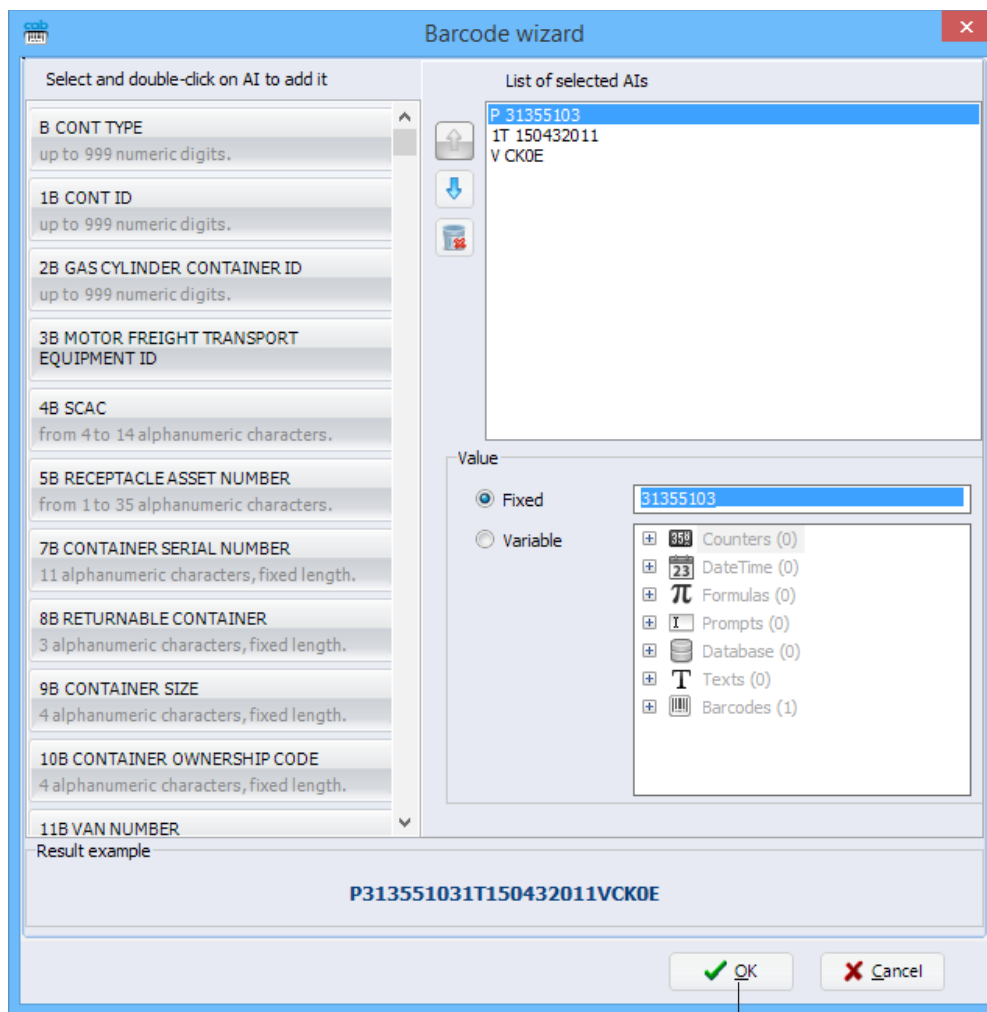


Figure 81 FACT barcode wizard

6.3.3 QR wizard

This barcode wizard helps you to create a QR code.

A QR barcode can contain:

- a link to a website
- a business card (vCard)
- a phone number
- a sms
- an email
- Wi-Fi login parameters

To create a new barcode:

- ▶ Select the barcode type QR.
- ▶ Click on the Wizard button.
- ▶ Choose the data type (1).
- For a vCard
 - ▶ Choose an AI in the available AI's list (4).
 - ▶ Double-click on the selected AI to add it to the list of selected AIs (5).
 - ▶ Select AI's value type (fixed or variable) (6).
 - ▶ Do previous steps again until you get the wished result (7).
- For other type
 - ▶ Enter fixed data (2) or click on the ... button (3) to select a variable.
- ▶ Validate with the OK button (8).

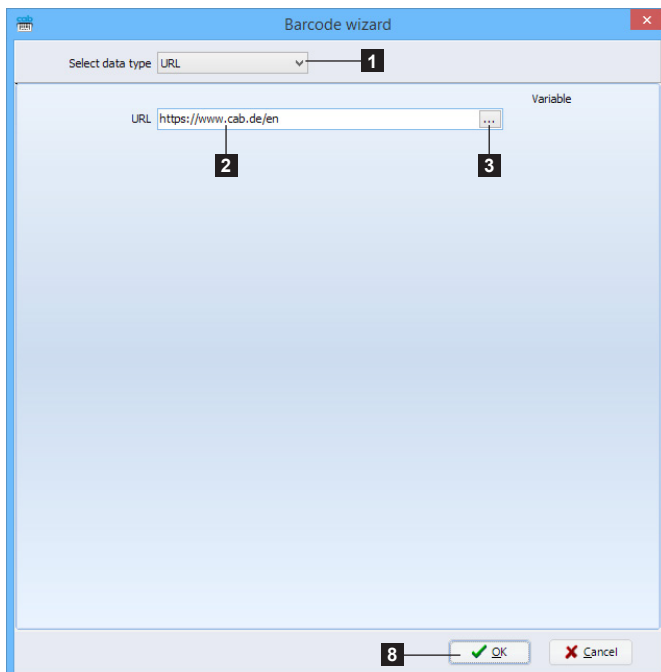


Figure 82 QR wizard for a website

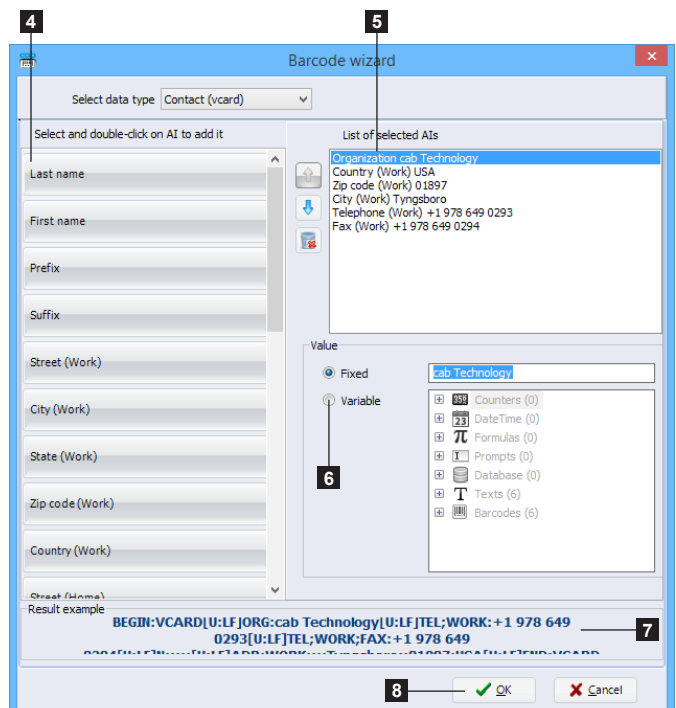


Figure 83 QR wizard for a vCard

6.4 Database wizard

This plug-in adds support of databases in cablabel S3. The wizard allows to create a query from a data source.

4 connection types can be defined:

- Access database connection (printing through the software)
- Excel file connection (printing through the software)
- OLEDB connection (printing through the software)
- Database Connector (printing in standalone mode)

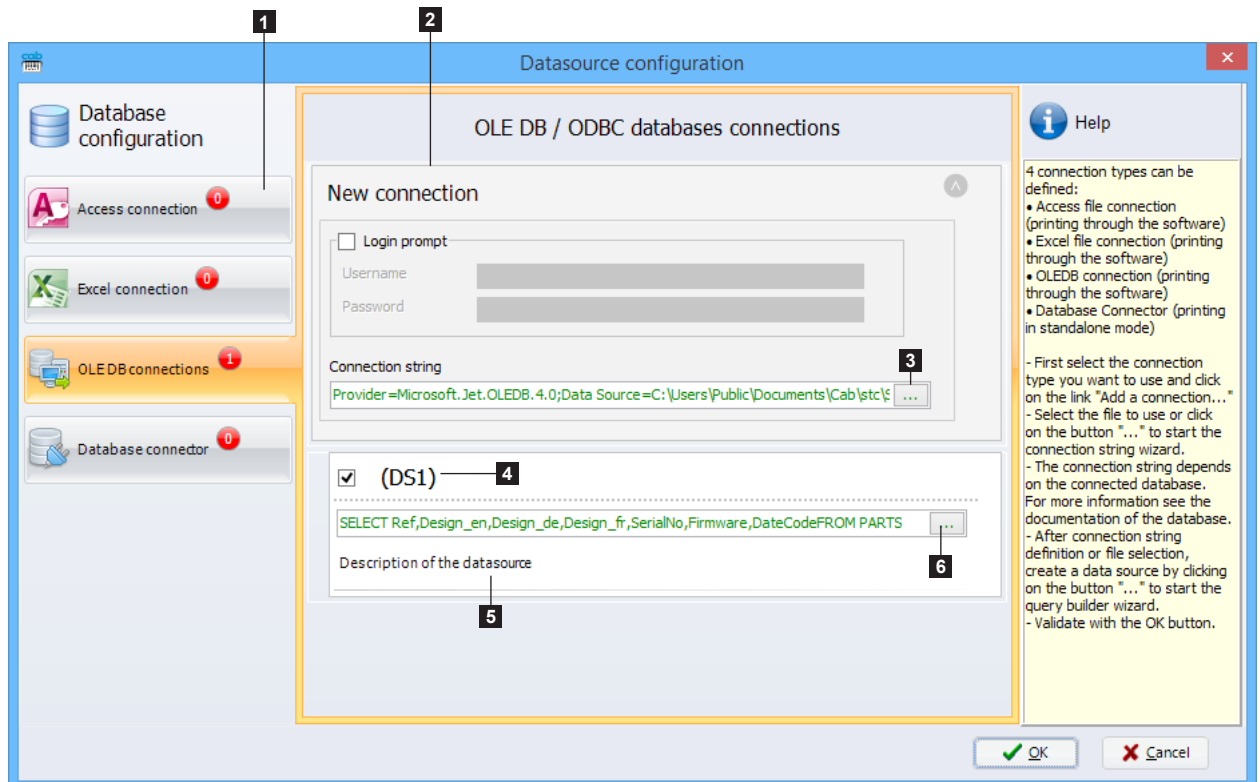


Figure 84 Database wizard

- | | |
|----|-------------------------|
| 1. | Connection type |
| 2. | Connection name |
| 3. | Connection string |
| 4. | Data source name |
| 5. | Data source description |
| 6. | Query builder |



Information!

Connection and data source names can be changed by double-clicking on them.

- Click on the button (3) to start the connection string wizard.
- The connection string depends on the connected database. ► Documentation from the database.
- After connection string definition, create a data source by clicking on the button (6) to start the query builder wizard.

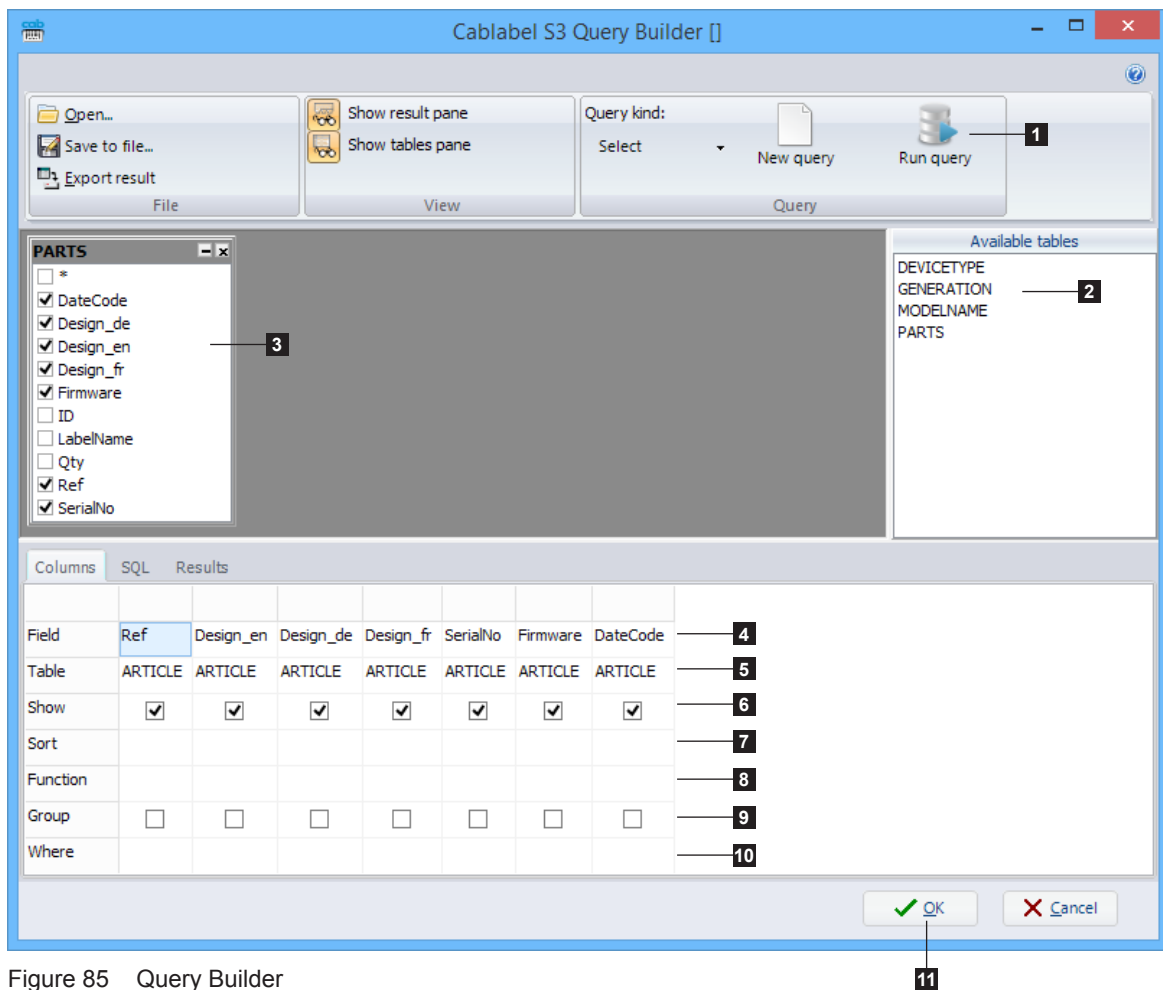


Figure 85 Query Builder

1. Toolbar
2. Available tables
3. Selected tables and fields
4. Field name
5. Table name
6. Used fields (SQL keyword: SELECT)
7. Sorting a field (SQL keyword: ORDER BY with parameter ASC or DESC)
8. Functions (SQL keyword: MIN, MAX, COUNT, AVG or SUM)
9. Grouping a field (SQL keyword: GROUP BY)
10. Selection filter (SQL keyword WHERE)

The Query Builder is a graphical wizard which helps you to create a new database query. It is possible to view your query in SQL format.

- Select one or more tables in the tables list (2) by double-clicking on it or drag and drop it in the left panel.
- If needed, create links between tables by selecting a field and drag and drop it from one table to another.
- Check required fields (3).
- Change selection or order of the fields in the result pane.
- Run query with the `Run query` button from the toolbar (1) if you want to see the result.
- Validate the query with the `OK` button (11).

6.5 Keywords

This plugin allows you to define the style and to select the language(s) of the keywords. It is also possible to view the standards keywords in their different languages as well as adding your own custom keywords.

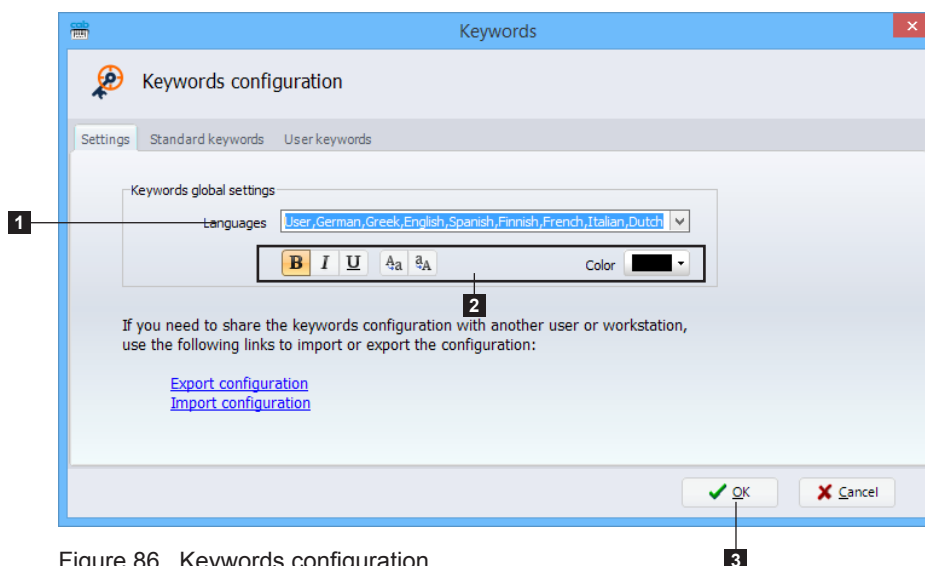


Figure 86 Keywords configuration

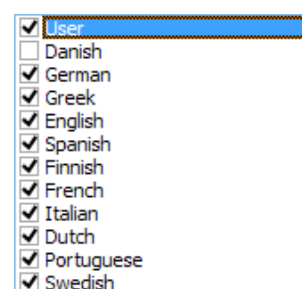


Figure 87 Languages list

- ▶ Select the desired language(s) (1) in the list (▷ Figure 84).
- ▶ Select the type of formatting to apply (2): bold, italic, underline, lowercase conversion, uppercase conversion, font color.
- ▶ Validate with the OK button (3).

It is possible to disable some standards keywords in the table in the Standards keywords tab:

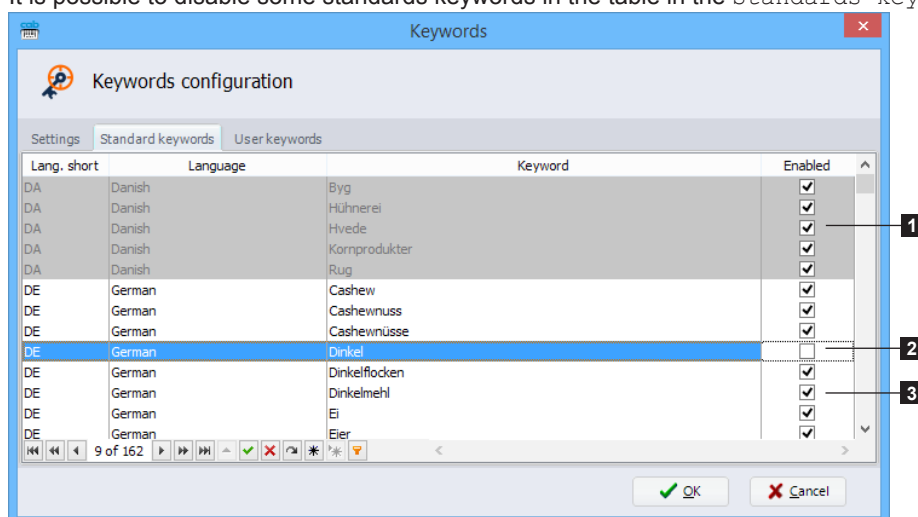


Figure 88 Standards keywords list

- | |
|-----------------------|
| 1. Disabled language |
| 2. Disabled keyword |
| 3. Activated keywords |

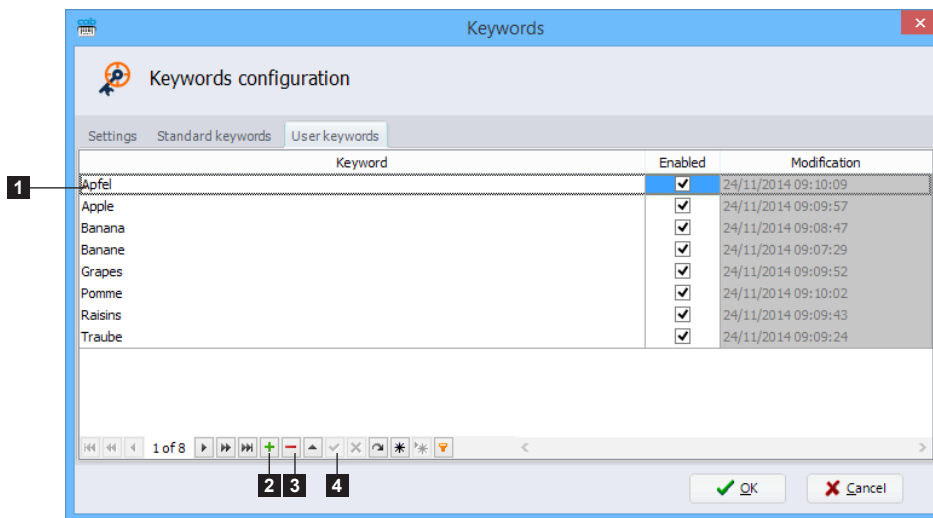


Figure 89 User keywords

To add a keyword to the list:

- Press the + button (2)
- Enter the keyword in the table (1)
- Enable / disable the keyword
- Validate if necessary with the button (4)

To delete a keyword from the list:

- Select the keyword in the table (1)
- Press the - button (3)

6.6 Layout table management

This plugin allows you to edit and modify a layout previously saved in a database using the transfer window (memory card) ▸ 5.5.2 Saving in a database.

It also allows the deletion of a record in the table.

To use this plugin, you need to create two configuration files.

These files must be located in the folder C:\ProgramData\cab\stc\Plugins and must be adapted to the database.

| Filename | Description | File content |
|---------------------------|---|---|
| LayoutTableManagement.udl | contains the connection string to the database. You just need to open the file for modifying it. | - |
| LayoutTableManagement.ini | contains the table name | [Database] LayoutTable= <i>Layouts</i> |

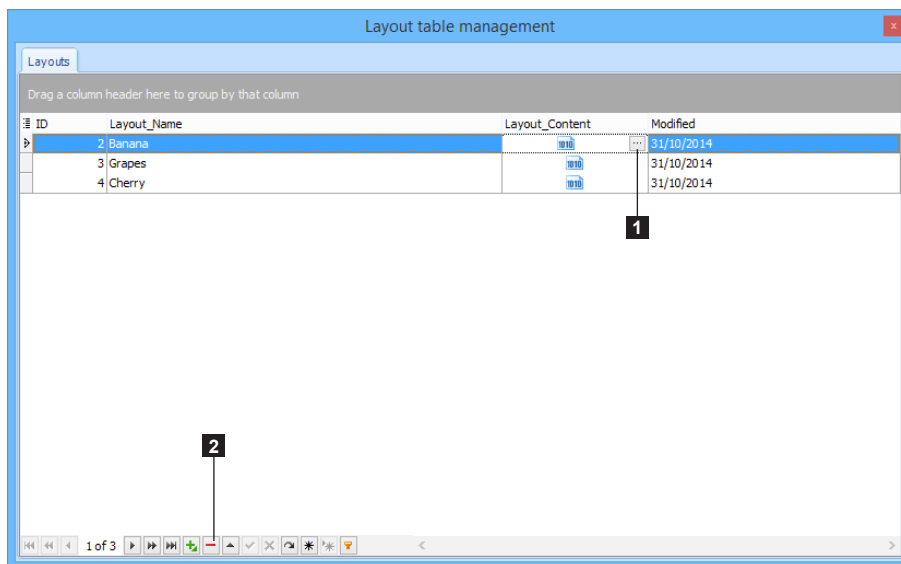


Figure 90 Layout table management

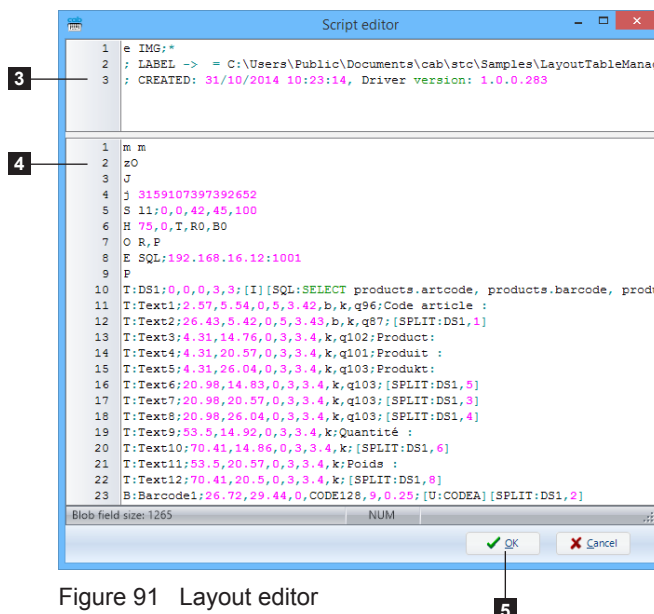


Figure 91 Layout editor

To edit a layout:

- ▶ Click on the button (1) to open the script editor window
- ▶ Change the header (3) or the script content (4) directly in the editor
- ▶ Validate by clicking the OK button (5)

To delete a record:

- ▶ Select the record
- ▶ Click on the delete button (2)

7.1 Installation parameters

When installing the software, it is possible to specify some parameters on the command line to automate the installation.

► Example for a silent installation :

```
cablabeIS3_Pro_Setup.exe /VERYSILENT /SUPPRESSMSGBOXES /DELINI=N /NORESTART
```

► Available parameters list :

/DELINI=Y, /DELINI=YES

Instructs Setup to delete the settings (ini file) without asking user.

/DELINI=N, /DELINI=NO

Instructs Setup to keep the settings (ini file) without asking user.

/SILENT, /VERYSILENT

Instructs Setup to be silent or very silent. When Setup is silent the wizard and the background window are not displayed but the installation progress window is. When a setup is very silent this installation progress window is not displayed. Everything else is normal so for example error messages during installation are displayed and the startup prompt is.

If a restart is necessary and the '/NORESTART' command isn't used (see below) and Setup is silent, it will display a Reboot now? message box. If it's very silent it will reboot without asking.

/SUPPRESSMSGBOXES

Instructs Setup to suppress message boxes. Only has an effect when combined with '/SILENT' and '/VERYSILENT'. The default response in situations where there's a choice:

- Yes in a 'Keep newer file?' situation.
- No in a 'File exists, confirm overwrite.' situation.
- Abort in Abort/Retry situations.
- Cancel in Retry/Cancel situations.
- Yes (=continue) in a DiskSpaceWarning/DirExists/DirDoesntExist/NoUninstallWarning/ExitSetupMessage/ConfirmUninstall situation.
- Yes (=restart) in a FinishedRestartMessage/UninstalledAndNeedsRestart situation.

5 message boxes are not suppressible:

- The About Setup message box.
- The Exit Setup? message box.
- The FileNotInDir2 message box displayed when Setup requires a new disk to be inserted and the disk was not found.
- Any (error) message box displayed before Setup (or Uninstall) could read the command line parameters.
- Any message box displayed by [Code] support function MsgBox.

/NOCANCEL

Prevents the user from cancelling during the installation process, by disabling the Cancel button and ignoring clicks on the close button. Useful along with '/SILENT' or '/VERYSILENT'.

/NORESTART

Prevents Setup from restarting the system following a successful installation, or after a Preparing to Install failure that requests a restart. Typically used along with '/SILENT' or '/VERYSILENT'.

/CLOSEAPPLICATIONS

Instructs Setup to close applications using files that need to be updated by Setup if possible.

/NOCLOSEAPPLICATIONS

Prevents Setup from closing applications using files that need to be updated by Setup. If /CLOSEAPPLICATIONS was also used, this command line parameter is ignored.

/RESTARTAPPLICATIONS

Instructs Setup to restart applications if possible. If Setup didn't close these applications (for example because /NOCLOSEAPPLICATIONS was used), this command line parameter is ignored.

/NORESTARTAPPLICATIONS

Prevents Setup from restarting applications. If /RESTARTAPPLICATIONS was also used, this command line parameter is ignored.

/LOADINF="filename"

Instructs Setup to load the settings from the specified file after having checked the command line. This file can be prepared using the '/SAVEINF=' command as explained below.

Don't forget to use quotes if the filename contains spaces.

/SAVEINF="filename"

Instructs Setup to save installation settings to the specified file.

Don't forget to use quotes if the filename contains spaces.

/LANG=language

Specifies the language to use. language specifies the internal name of the language as specified in a [Languages] section entry.

When a valid /LANG parameter is used, the Select Language dialog will be suppressed.

/DIR="x:\dirname"

Overrides the default directory name displayed on the Select Destination Location wizard page. A fully qualified pathname must be specified. May include an "expand:" prefix which instructs Setup to expand any constants in the name. For example: '/DIR=expand:{pf}\My Program'.

/GROUP="folder name"

Overrides the default folder name displayed on the Select Start Menu Folder wizard page. May include an "expand:" prefix, see '/DIR='. If the [Setup] section directive DisableProgramGroupPage was set to yes, this command line parameter is ignored.

/NOICONS

Instructs Setup to initially check the Don't create a Start Menu folder check box on the Select Start Menu Folder wizard page.

/SERIAL=XXXXX-XXXXX-XXXXX-XXXXX

Instructs Setup to use the specified product key XXXXX-XXXXX-XXXXX-XXXXX.

7.2 Start parameters

When starting the software, it is possible to specify some parameters on the command line to automate the starting.

- Example to open automatically a label:

```
stc.exe /OPEN "C:\Users\Public\Documents\cab\stc\Samples\label_printer.stc"
```

- Available parameters list:

/USER

Start the software as a normal user and hide device configuration.

/NOCONFIGSAVING

Avoid saving of actual software configuration (plug-ins, windows positions, etc).
Used together with /USER allow to lock software settings.

/OPEN "label name"

Open automatically the specified label.
Don't forget to use quotes if the filename contains spaces.

/PRINT "label name"

Open the specified label and show `Print` dialog.
Don't forget to use quotes if the filename contains spaces.

/PLUGINS "configuration filename"

Define the plug-ins to use, according to the xml configuration file.
Allow for example to create different shortcuts with specific software configurations.
Don't forget to use quotes if the filename contains spaces.

Notice !



In order to create a personalized plug-ins configuration file:

- Start cablabel S3 normally
- Add or remove wished plug-ins in the corresponding window of the `About` menu in the `General` tab.
When the software is closed, these settings will be saved in the `stc_Plugins.xml` file in the folder `C:\Users\"username"\AppData\Roaming\cab\stc`
- Copy this file, rename or modify it, for loading it with the parameter `/PLUGINS`